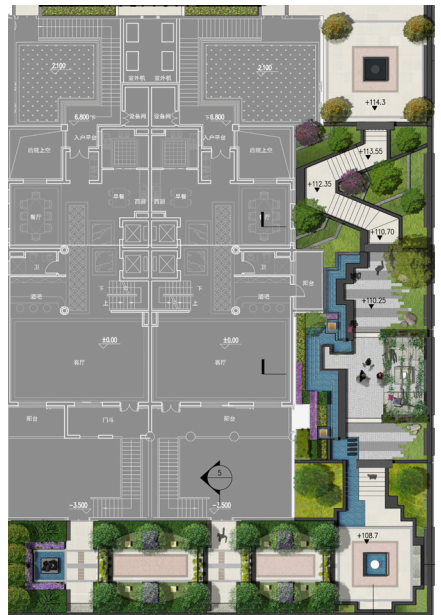


Beijing Hillside Model House



Project
China Resources Land Hillside Housing
Location
Beijing, China
Client
China Resource Land (Beijing) Co., Ltd
SWA Scope
Landscape Architectural Services
Size
Site: 15 ha

This high-end residential project is located in Men Tou Gou District at the west of Beijing. The 15ha site is situated in a hillside setting on a series of steep slopes, which affords dramatic views and yet poses great design challenges. The community is divided into three neighborhoods for a mix of townhouse, garden units and high-rise apartment development. Architectural elements are united in a Mediterranean vocabulary system, which is manifested in landscape features through Mediterranean style signature treatments for terrace, garden, fountain and alley. Each quadrant has a distinct central circulation system either featuring a series of terrace garden or a winding creek trail or a central plaza. All pathways converge at the central park in front of clubhouse, which is highlighted by a sophisticated choreography of cascading pools, floating parterres and cypress alley leading to the well-crafted grand reflection pool on lower terrace.

The model house landscape includes a series of courtyards around the housing units. The design is to create a strong "picture window" concept that connects the living space with the context.