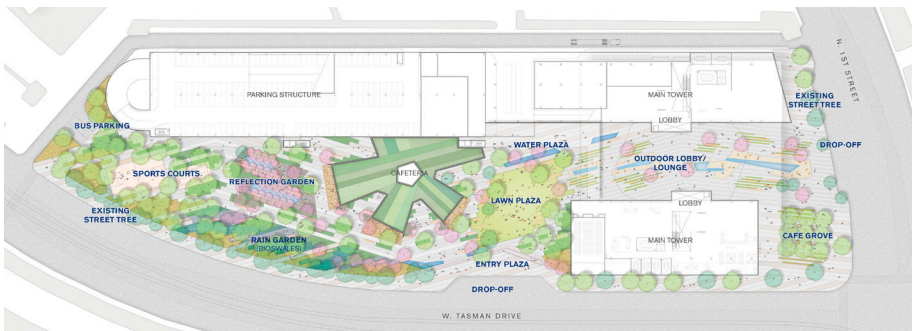
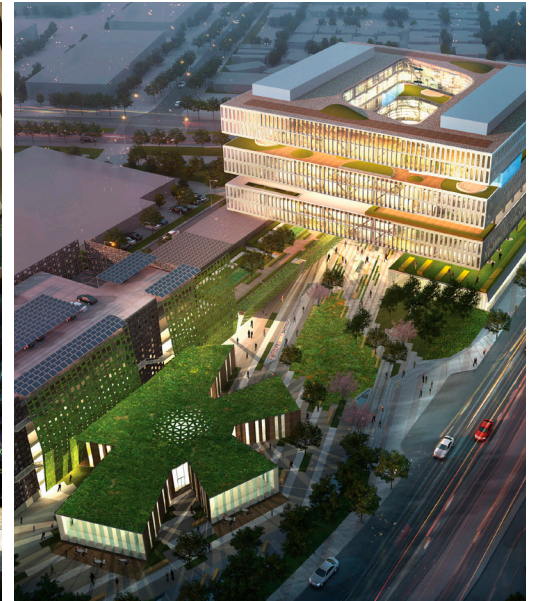


Samsung America Headquarters



The new headquarters for Samsung SSI in San Jose is a bold vision for a campus and a workplace that put interaction and synergy at the center - building a culture and brand that is powered by the best ideas and talent. The building is carefully crafted to encourage communication and interaction, leading to a synergistic working environment that will help further transform Samsung into a regional leader in Silicon Valley.

To harmonize with the architectural expression of iconic buildings, we created a field of landscape throughout the site. Inspired by the symbolic landscape feature of the San Jose "Guadalupe River," we propose a signature landscape band throughout the site. Fields of hardscape, softscape, and water features will flow along the band. As it meanders through, the character of outdoor space will morph from urban to naturalistic.

Location

San Jose, California

Client

Samsung Semiconductor, Inc.

NBBJ, Los Angeles

SWA Scope

Landscape Architecture Services

Size

Site: 9.44 acres / 38,202.3 m²

Architect

NBBJ, Los Angeles