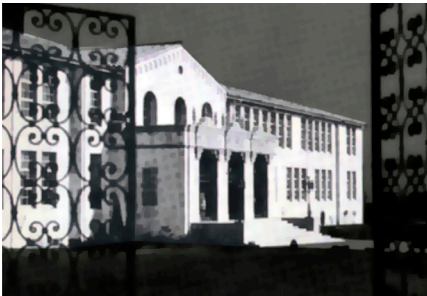
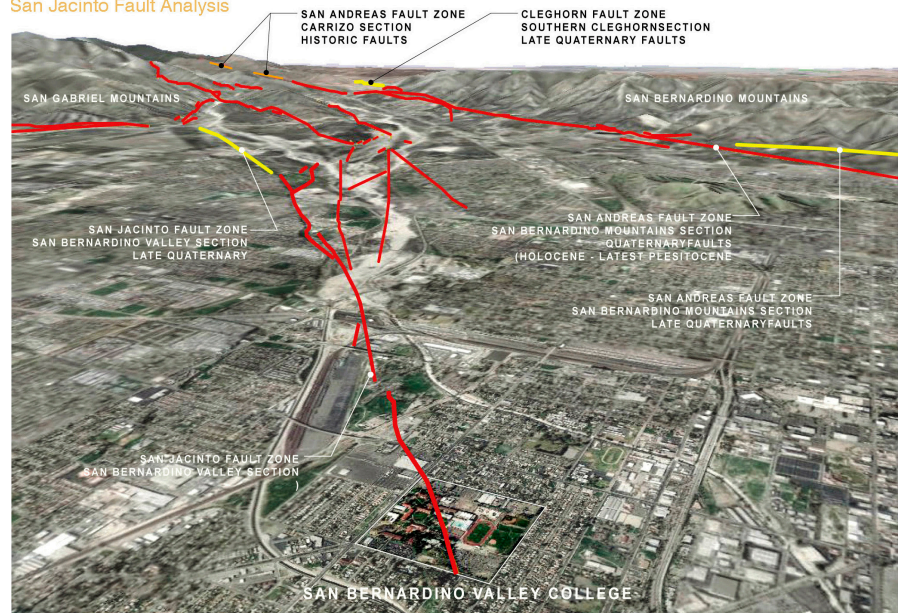


San Bernardino Valley College



San Jacinto Fault Analysis



The San Jacinto Fault, part of the San Andreas Fault Zone, runs directly through the heart of the campus and has required the demolition of academic buildings situated within the fault zone. The removal of buildings has created an opportunity for the campus to reconcile its open space and allow for the creation of new academic buildings essential to its growth.

SWA was selected by SBVC to collaborate with Steinberg Architects in the creation of a campus framework master plan extending out to 2040. SWA's focus was on the landscape master plan and illuminating issues related to facilities management, circulation, recreation activities, community program, open space, site design, sustainable guidelines, preservation of existing landscape and the interpretive and physical integration of the San Jacinto Fault.

Location

San Bernardino, California

Client

San Bernardino Valley College (SBVC)
Steinberg Architects

SWA Scope

Landscape Master Plan

Size

80 acres (32.4 hectares)

Architect

Steinberg Architects