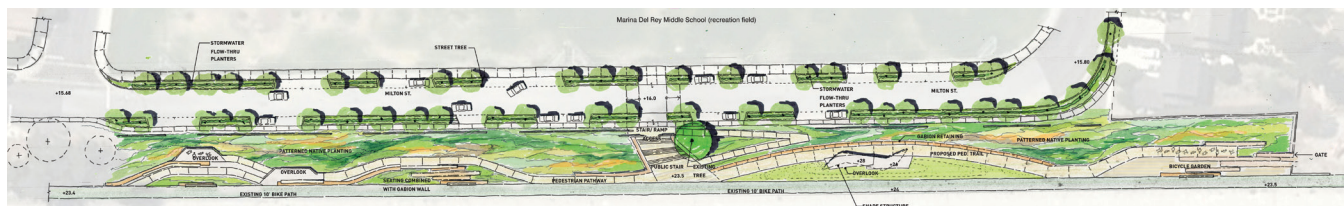


Milton Street Park



Public workshop on design alternatives

This 1.2-acre linear urban park alongside the Ballona Creek Bike Trail incorporates numerous green-design elements, including the use of porous paving and recycled materials, native planting, storm water capture and treatment, promotion of alternative transportation, and creation of an interpretative ecological habitat for birds, insects, and reptiles. A variety of special elements—bird-watching platforms, bike trail enhancements, seating areas, and outdoor picnic areas—enhance visitor experience along the park, which stretches over 1,000 feet in length and averages 45 feet wide.

In addition to providing landscape architectural services, SWA collaborated with MRCA on community outreach to address the needs of local residents and reach consensus on the project. Through intensive

Location

Marina del Rey, California

Client

Mountains Recreation and Conservation Authority

SWA Scope

Landscape Architecture

Size

1.2 acres (0.49 hectares)

Awards

Westside Urban Forum Merit Award, Open Space Category

Green Design Elements

Porous paving, native planting, recycled materials, stormwater capture and treatment, promotion of alternative transportation, and creation of interpretative ecological habitat for birds, insects and reptiles

public meetings and workshops, the team focused on a range of park design options and developed elements such as decorative fencing to discourage illegal activity and maximize neighborhood safety.