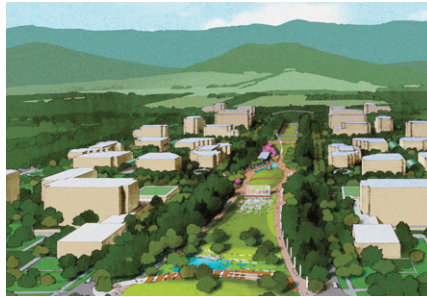
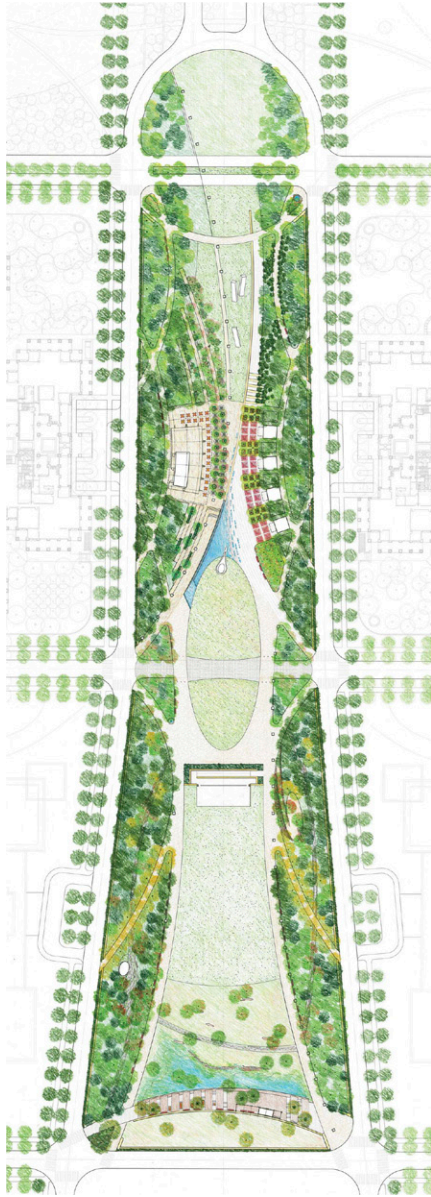


## Eco Tech City - Central Park



Central park is the heart of the office area that connects Lake Muchengyi at the North to Mt. Sidawang at the South. In order to emphasize this connection, a strong visual corridor running from North to South is created by using big canopy trees and landscaped berms that frame magnificent views of the lake and hills.

The design defines four distinct zones in this 800m-long linear park: "Spring Entry Garden", "Summer Social Plaza", "Autumn Event Meadow" and "Winter Atrium". Each of these zones will be seasonally enhanced by using planting, programming and other park elements for its given season. For example the "Summer Social Plaza" will consist of a sequence of plazas with fountains and sculptures that provide spaces for having lunch and holding work group

### Location

Dalian, China

### Client

Dalian YIDA Group

Dalian Science & Technology Town Development Co., Ltd.

### SWA Scope

Urban design and master planning

Landscape architectural services

### Size

6.2 hectares

### Architect

James K.M. Cheng, Architects

sessions or other company gatherings. The social core of Central Park, the "Central Permanent Café", offering indoor and outdoor dining will be located in the center of this plaza.