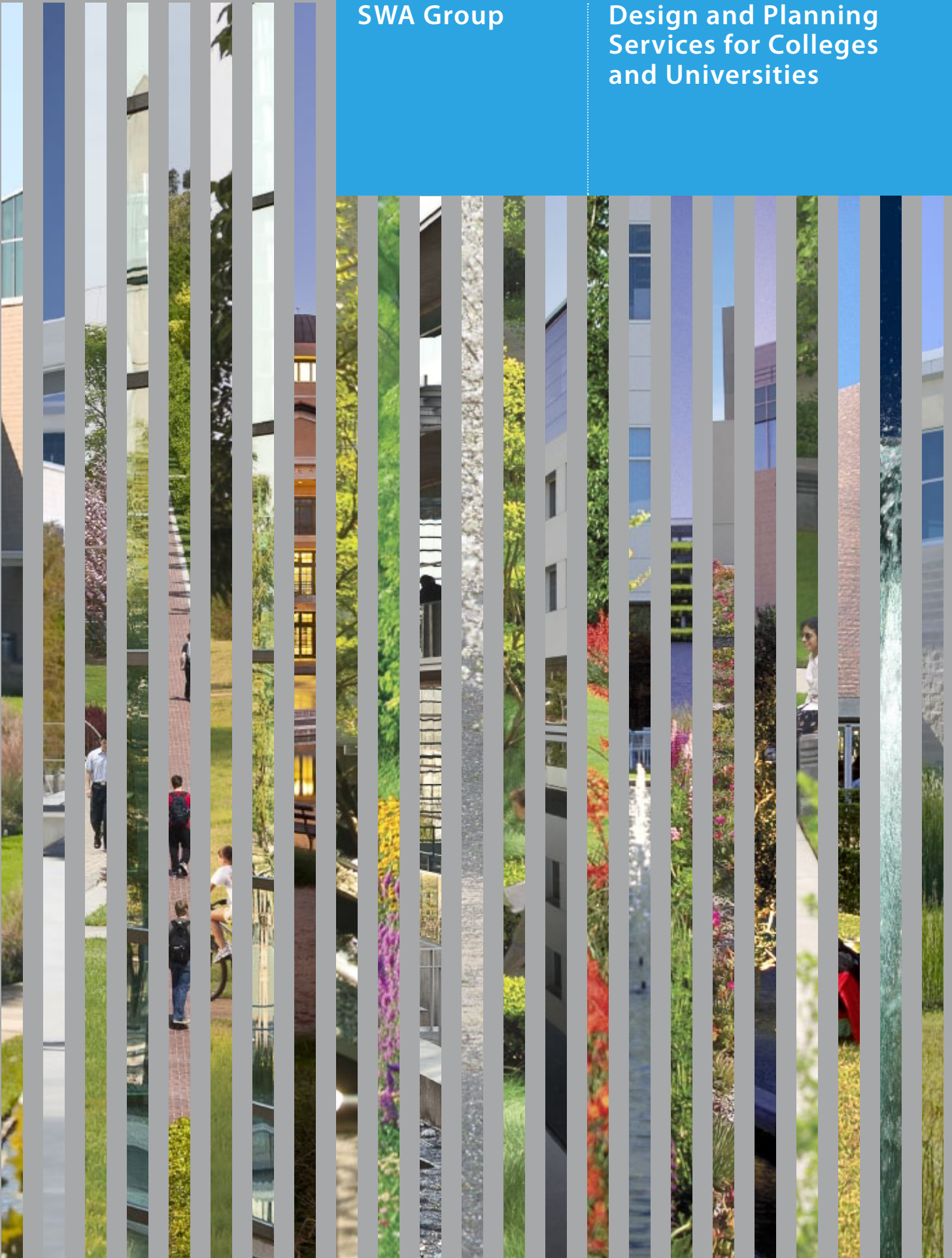


SWA Group

Design and Planning
Services for Colleges
and Universities





Stanford University /// Stanford, California

For over 30 years SWA has been working with Stanford University to reclaim the 100 year old master plan vision of Leland Stanford and Frederick Law Olmsted for the campus. This series of campus improvement projects has restored the historic axis, open spaces and landscape patterns. Integrating the university's facilities needs with a long-term landscape vision, the projects recover the campus's historic axes, open space patterns and juxtaposition of formal landscape spaces with naturalistic landscapes within the central campus. SWA also provided planning, approval processing and landscape services for the Sand Hill Road Corridor projects including Stanford West Apartments, the Rosewood Sand Hill Hotel and Office development, Stanford Shopping Center expansion, and Stanford West Senior Housing.

SWA Group

"After many projects, I continue to work with SWA because of their commitment to excellence in design of course, but as importantly in team collaboration, client service and in shared responsibility for the results of the project over the long run."

David J. Neuman, FAIA, University of Virginia (formerly of Stanford University)

For over five decades, SWA has been recognized as a world leader in landscape architecture, planning and urban design. Our projects, located in more than 60 countries, have garnered over 700 awards, and many of our principals are widely acknowledged as among the industry's most talented and experienced designers and planners. After emerging in 1959 as the West Coast office of Sasaki, Walker and Associates, the firm first assumed the SWA Group name in 1975.

In our college and university work, we assist clients and their building architects in planning and designing campuses that fully integrate functionality, beauty, nature, art and sustainability. At the core of our work is a passion for creating campuses that are beautiful and sustainable, that strengthen institutional identity, and that benefit the lives of students and employees.



Lone Star College CyFair /// Cypress, Texas

SWA provided master planning and landscape architectural design services for the CyFair Campus of Lone Star College. The 200-acre campus is surrounded by the Katy Prairie, an endangered ecosystem of coastal prairie grass meadows marked by groves of trees and connected to a system of wetlands, bayous, and ponds. SWA's design restores this sensitive ecosystem, which characterized the region for millennia, and expands wildlife habitat. 20 acres of detention lakes were created to accommodate storm water runoff and provide irrigation water for the campus, thus conserving water resources. In addition, more than 3,200 indigenous trees were planted. Buildings are clustered around the water features of the design, allowing the overall landscape of the campus to serve as a living laboratory for students and the public to enjoy and study firsthand.

Our Services

“We’re very pleased with the efforts and expertise of SWA Group in tackling an exciting and challenging project through many needs with tremendous sensitivity and with wonderful results.”

*Steve Lauzier Director, Cornell University
Real Estate*

Landscape Architecture

SWA’s award-winning landscape design ranges from large, multi-functional sites to small, intimate spaces. Our unique design process joins intensive research into materials, lifestyles and landscape technologies with a deep understanding of how people use outdoor spaces. Extensive experience with large campuses enables us to deal creatively with any elements of a campus site. Because of our familiarity with master planning, our designs are seamless with the larger planning concepts of a project. SWA’s landscape architectural work has received worldwide recognition for its creative excellence.

Scope of Services: Site Planning, Concept Design, Schematic Design, Design Development, Construction Documentation, Construction Observation

Planning and Urban Design

We are often brought into a project by building architects to provide landscape master planning. For clients seeking a campus plan that is primarily land- and landscape-based, we play an even more central role in the site selection and master planning process. Being involved in the initial planning stages of a project allows our designs to integrate infrastructure and buildings with land, natural systems and landscape, which can have a significant impact on the outcome. If the site is densely urban, we can bring to bear our substantial urban design expertise. SWA’s award-winning planning and urban design work is recognized for creating exceptional places.

Scope of Services: Master Plans, Land-Use Plans, Urban Design, Site Plans, Site Analysis and Selection, Design Guidelines, Development Strategies, Government Approvals



Tokyo University Foreign Studies Campus /// Fuchu, Japan

The Foreign Studies Campus of Tokyo University serves Japanese and foreign students pursuing a wide range of degrees in international studies and all aspects of world culture. SWA's master plan and design organized a clear, hierarchical landscape with a strong diagonal spine connecting from the adjacent town's retail center and transit station into the campus, through an entry plaza and a circular central plaza, past interconnected courtyards and gardens, and then to the student housing and playfields. The design sited buildings to preserve as many existing trees as possible, provided separation of pedestrian and vehicular circulation for the campus, and created contiguous open space throughout the campus to balance the small size (26.4 acres) of the campus.

What Makes Us Different

“We owe a debt of gratitude to SWA for helping us to clarify our vision and for creating a master work of landscape art for students and the community to enjoy for decades to come.”

Deb Morgan, Ph.D., Alamo Colleges

Prominent College and University Experience

We have been involved in the design and planning of the campuses of some of the world’s most prominent institutions. We design campus environments that reflect the culture of a school while facilitating learning, research and campus living. We work throughout the world, which gives us insights into the latest global design trends and innovations.

Experts in the Integration of the Built and Natural Environments

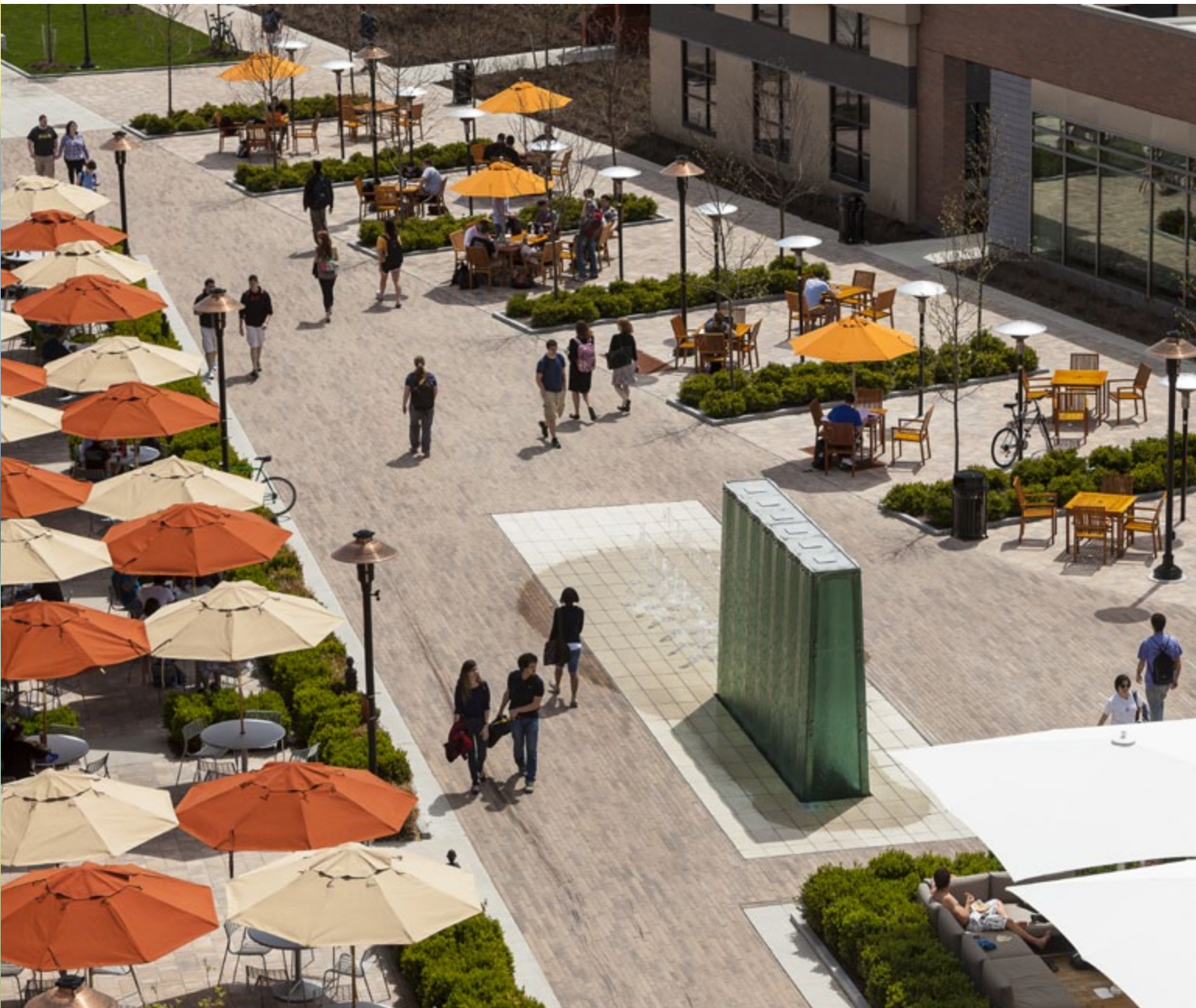
At our core, we are focused specialists in landscape architecture. Our concepts foster connections between land, nature, buildings, art and culture. Even our large-scale planning and urban design work is grounded in technical and aesthetic knowledge of landscape architecture. As a result, our work is inherently more “green” —incorporating sustainable practices and technologies as a seamless part of design.

Customized Solutions and “Big Ideas”

Every client is unique, every context has new challenges, every site has singular possibilities. And every one of our solutions reflects these truths. We are not committed to a single design style or to past solutions. We seek to help clients achieve their unique aspirations and to solve their unique problems. We seek out “big ideas” that will be impactful and add value. To achieve these breakthroughs, we spend a great deal of time investigating sites, land uses, human lifestyles and economic considerations. We research materials and technologies, we collaborate and debate, and we seek expertise from within our studios and from the outside. More than 75% of our work has historically come from repeat clients who value this thorough, creative approach.

Rochester Institute of Technology (RIT) Global Village /// Rochester, New York

RIT's Global Village is a campus residential neighborhood for 2,000 students that includes a mixed-use plaza, convenience retail and seminar and study lounges. The neighborhood's strong pedestrian "walk and courtyard" pattern extends the academic core's spine and provides seamless links to existing campus housing beyond. The neighborhood pattern also connects with the campus' proposed bike and shuttle spine. The project triples the number of students that can live with urban amenities adjacent to the academic core.





+ CREATE Campus National University of Singapore



+ Northwest Vista College San Antonio, Texas



+ University of the Pacific Stockton, California



+ College of the Desert Multi-purpose Building Palm Desert, California



+ UNLV Greenspun College of Urban Affairs Las Vegas, Nevada



+ UCLA Northwest Campus Los Angeles, California



+ Dominican University San Rafael, California



+ SOKA University of America Aliso Viejo, California

Tarrant County College /// Fort Worth, Texas

The Tarrant County College District (TCCD) created a fifth college campus in downtown Fort Worth to meet the growing needs of the region. The campus site is bisected by the Trinity River and the design features a connecting bridge. SWA provided the campus master plan and landscape design, including two entry plazas, courtyards, streetscape, water features and roof gardens. SWA's goal for the project was to provide a stimulating and rewarding environment that encourages learning and pushes the boundaries of innovation.



“SWA has been a pleasure to work with. Their creativity and attention to detail has really made the difference in our landscape and master planning efforts.”

David Salazar, AICP, California State University, Long Beach

Deep in Talent

SWA principals are among the world’s most talented and experienced designers and planners. Our recruitment standards are quite high; less than 5% of applicants are hired to become part of our team. Associates and staff, culled from top university design programs, gather extensive practical experience in their years with SWA. We foster personal innovation and creativity while remaining knowledge and research driven. Principals, associates and staff are hands-on professionals who work closely with clients throughout the project.

Steeped in Professional Commitment

SWA’s passion is to design exceptional places for our clients. We spend a great deal of personal time immersed in informal research and professional exploration. We share a deep appreciation of nature and the beauty of natural systems. We are also inspired by art, architecture, and sociology. To stay current and inspired, we teach, participate in design juries and engage with major university programs around the world. We are 100% employee-owned and care deeply about our work and about the reputation of the company that we all own.

Organized for Responsiveness

A mid-sized company, we are grouped into collaborative studio offices. This arrangement keeps us agile and responsive at the studio level, while providing the support of robust companywide resources. And to ensure that our designs are practical and buildable as well as aesthetic and compelling, we maintain our own construction review professionals—some of whom are senior principals.



Foothill College /// Los Altos Hills, California

In the early 1960s, SWA provided the original design for this award-winning community college campus. In more recent years SWA was brought in for re-design purposes. The additions are Student Services and Life Sciences buildings and a theater. The Ornamental Horticulture and Life Science Department relocated its outdoor classrooms and labs to a previously undeveloped part of the campus. The lab areas include a horse pasture and paddocks, a landscape construction field, a sustainable garden and an arboretum and numerous ornamental gardens. The majority of the new landscape is drought-tolerant native grasses and oaks to blend in with the surrounding natural foothills. SWA also designed green roofs planted with native grasses on five buildings within the new campus addition.

Value-Added Outcomes

Master planning, site planning and landscape architecture typically represent a small fraction of the total construction cost of a project, yet can create significant value.

SWA is considered a high-end design and planning firm within our industry. The beneficial impact of using this level of expertise compared to low- to mid-range level services can be critical.

Aesthetic and Economic Considerations

Beautiful, innovative, iconic design can enhance the prestige of a campus as well as the value of the surrounding community. Design that reinforces the identity of an educational institution contributes to social cohesion and student pride. Intelligent design can reduce construction, operational, and environmental costs by means of incorporating the latest in sustainable materials and technologies.

Environmental Advantages

Well-crafted campus planning and design can optimize placement of buildings, connections, roadways and open space to make the best use of a site's topography and natural systems. It can mitigate environmental damage and restore native features. It can also reduce transportation, logistical and energy costs. Sustainable landscape architecture minimizes the use of energy, water and other resources and helps reduce an organization's carbon footprint by providing green infrastructure, reforestation and other carbon sequestration strategies.

Social Impact

The health and well-being of students is correlated with a healthy, invigorating campus environment. The look, feel and function of exterior space can enhance enjoyment, creativity, interaction and learning. A compelling facility is an amenity that can attract and retain students. An exceptional campus can add social benefit to an entire region.

SWA is committed to providing value for all of our college and university clients: for your facilities, your students, your employees and for your larger community.



+ King Saud Bin Abdulaziz University (KSAU) Riyadh, Saudi Arabia



+ Sam Houston State University, Old Main Restoration Huntsville, Texas



+ Harvard University Tanner Fountain Cambridge, Massachusetts



+ Cornell University East Hill Village Ithaca, New York



+ Universidad de Monterrey Master Plan Monterrey, Mexico



+ UC Davis Tercero Student Housing Davis, California



+ UC Davis West Village Davis, California



+ University of Houston, Cullen Boulevard Entry Houston, Texas

The Offices of SWA

Sausalito

2200 Bridgeway Blvd
Sausalito, California
94965-5904
415.332.5100
sausalito@swagroup.com

Laguna Beach

570 Glenneyre Street
Laguna Beach, California
92651-2453
949.497.5471
laguna@swagroup.com

Houston

1245 West 18th Street
Houston, Texas
77008-3342
713.868.1676
houston@swagroup.com

Dallas

2211 North Lamar
Suite 400
Dallas, Texas
75202-1080
214.954.0016
dallas@swagroup.com

San Francisco

301 Battery Street
Two Mezzanine
San Francisco, California
94111-3203
415.836.8770
sanfrancisco@swagroup.com

Los Angeles

811 West 7th Street
Suite 430
Los Angeles, California
90017-3415
213.236.9090
losangeles@swagroup.com

Shanghai

718 Building 1, Floor 7
High Street Loft
No. 508 Jiashan Road
Xuhui District
Shanghai 200031
China
+86 21 6074 5050
shanghai@swagroup.com

United Arab Emirates

(Branch Office)
Executive Suite
PO Box 120811
Sharjah, U.A.E.
uae@swagroup.com



www.swagroup.com

This brochure is printed on Endeavour recycled paper: acid-free, free of elemental chlorine, and sourced from FSC-certified, well-managed forests.