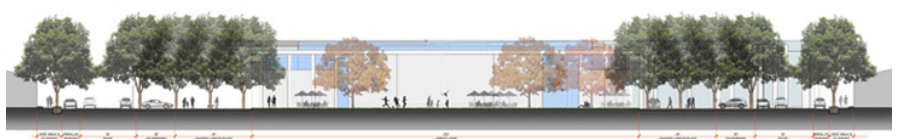
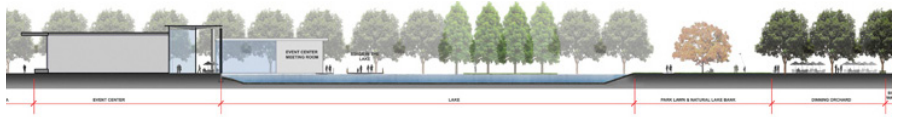
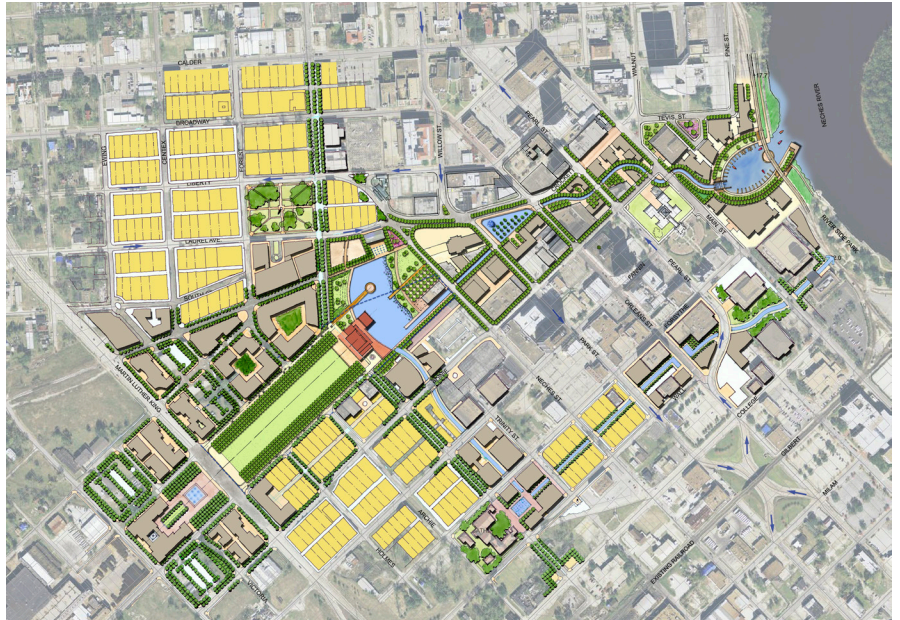


The Commons Phase One Beaumont Central Park and Waterway



SWA was selected by the city to lead a team of architects and engineers to design the first phase of a new “lake” district in downtown Beaumont with a 25,000sf Events Center, 16-acre park and a connecting one-mile-long waterway that threads through downtown and restores the city’s historical ties to the Neches River. The Event Center, the cultural and meeting venue for the city, is composed of a cluster of smaller structures arranged under a great porch. An amphitheater and floating stage on a four-acre lake serve outdoor performances. The waterway begins its journey to the Neches River at the lake, making its way between a Farmers Market and garden restaurant before passing into the business and civic districts of the city.

Location

Beaumont, Texas

Client

City of Beaumont

SWA Scope

Urban planning, a collaborative team charrette process and conceptual design services

The project was designed to LEED Gold or Platinum standards.

Size

16 acres (6.5 hectares)

Architect

Studio Red Architects