



SWA

Landscape Architecture

Planning

Urban Design





SWA Group

“SWA has an uncanny ability to create a powerful conceptual vision, see it through all levels of documentation to project completion, with magnificent detailing and execution.”

[Ronald A. Loch, Taubman](#)

For over five decades, SWA has been recognized as a world leader in landscape architecture, planning, and urban design. Our projects, located in more than 60 countries worldwide, have garnered over 600 awards, and many of our principals are widely acknowledged as among the industry's most innovative and experienced designers and planners. After emerging in 1959 as the West Coast office of Sasaki, Walker, and Associates, the firm became the SWA Group in 1975.

Although SWA is one of the largest firms within our industry, we've organized ourselves into smaller studio-based offices to enhance creativity and client responsiveness. Historically, over 75% of our work has come from repeat clients. SWA has had the enviable opportunity to work with some of the world's most renowned public and private sponsors of projects, and some of the world's most talented architects, engineers and related professionals.

Our work is fueled by a deep appreciation for nature and the beauty of natural systems. We are also inspired by the complexity of human-made systems and the human interactions they influence. Our projects have become recognized for their visionary aesthetics, exceptional functionality, and keen understanding of social design, as well as their emphasis on environmental sustainability. At SWA's core is a passion for imaginative, solution-oriented design that adds value to land, buildings, cities, regions, and people's lives.

Civic
Communities
Commercial & Mixed Use
Corporate
Educational
Healthcare
Hospitality & Leisure
Natural Systems
Parks
Residential
Transportation
Urban Design & Waterfront



Landscape Architecture

"After many projects, I continue to work with SWA because of their commitment to excellence in design, team collaboration, and client service, and their shared responsibility for the results of the project over the long run."

David J. Neuman, FAIA, University of Virginia

Scope of Services

- Site Planning
- Concept Design
- Schematic Design
- Design Development
- Construction Documentation
- Construction Observation

As a recognized design leader in landscape architecture, SWA seeks creative, regenerative solutions for our clients' projects. We provide complete landscape architectural services, from site planning through construction observation. We often assist our clients with continuing landscape design consultation after construction completion. SWA designers have expertise in working on both very large, complicated projects, and at a smaller, more intimate scale in the creation of green roofs, small urban parks, plazas and gardens. SWA's landscape architectural work has received worldwide renown for its innovative excellence.



Landscape Architecture



“With their imaginative, open-minded approach, SWA has consistently been a critical force in creating the big idea and bringing it into being.”

Thomas Brudzinski, The Rouse Company



Las Ventanas al Paraiso Cabo San Lucas, Baja, Mexico

Hermann Park Houston, Texas

Charleston Park Mountain View, California

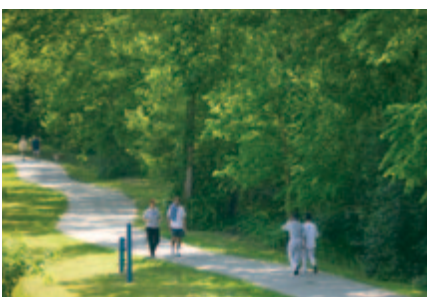
DreamWorks SKG Animation Studio Glendale, California

CentrO Oberhausen Oberhausen, Germany

Stanford University Stanford, California

PPG Place Pittsburgh, Pennsylvania

The Library of Congress Packard Campus Culpeper, Virginia



[Stanford Cantor Art Center](#) Stanford, California

[Beijing Finance Street](#) Beijing, China

[Desert Ridge Marriott](#) Phoenix, Arizona

[Terry Hershey Park](#) Houston, Texas

[Sun City Yokohama](#) Hodogaya, Japan

[Tunica RiverPark](#) Tunica, Mississippi

[Whole Foods Corporate Headquarters](#) Austin, Texas

[St. Rose Dominican Hospital](#) Henderson, Nevada

[Google Headquarters](#) Mountain View, California

[Lite-On Electronic Headquarters](#) Taipei, Taiwan

[Classic Residence by Hyatt](#) Palo Alto, California

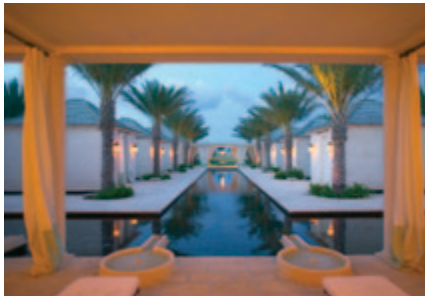
[Arizona Center](#) Phoenix, Arizona

Landscape Architecture



“SWA makes us better designers by always challenging us to find the singularly correct solution for each project. No matter the design problem, SWA’s creativity and progressive approach to integrating architecture, planning and landscape design produces winning outcomes time after time. Oh, and they’re fun to work with.”

Marty Borko, Principal, Gensler



Tokyo University Foreign Studies Campus Fuchu, Japan

Grand Hyatt Mumbai Mumbai, India

The Palms Grand Resort Turks & Caicos Islands, British West Indies

Karuizawa Resort Community Karuizawa, Japan

Ford Premier Auto Group World Headquarters Irvine, California

Soka University of America Aliso Viejo, California

Jeffrey Open Space Trail Irvine, California

Avenue of the Stars Los Angeles, California



Planning

"For nearly forty years, SWA has helped the Irvine Company create one of the world's premier new towns by providing us with innovative community planning and urban design. We value their ability to both plan great communities and help bring them to life with strong landscape architecture."

[Rob Elliott, the Irvine Company](#)

Scope of Services

- Master Plans
- Land Use Plans
- Site Plans
- Site Analysis and Selection
- Design Guidelines
- Development Strategies
- Government Approvals

For large-scale projects, SWA provides comprehensive land plans and master plans. As planners with aesthetic and technical understanding of land, natural systems and urban design, we create plans that make sensitive use of terrain, landform, natural resources, landscape, infrastructure, and buildings, resulting in projects that integrate the natural and built worlds. We apply these same talents to land conservation and restoration projects. SWA's award-winning planning work is globally recognized for creating exceptional places that are making real impact toward a thriving and more habitable future for people throughout the world.

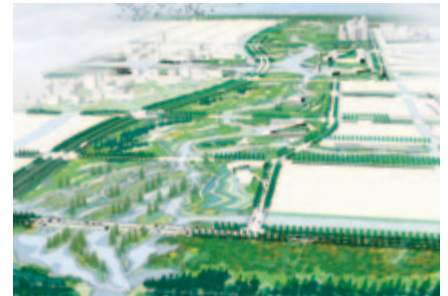


Planning



“We’re very pleased with the efforts and expertise of SWA Group in tackling an exciting and challenging project through many needs with tremendous sensitivity and wonderful results”

Steve Lauzier, Cornell University



Chongming Island's North Region Shanghai, China

Stanford University Campus Planning Stanford, California

First Colony Houston, Texas

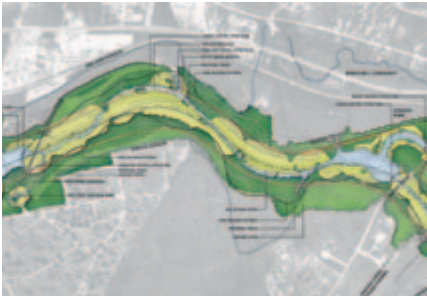
Arabian Canal Dubai, United Arab Emirates

Alameda Marina Village Alameda, California

Shady Canyon Irvine, California

Ningbo East New Town Eco-Corridor Ningbo City, China

Golden Gate National Recreation Area Marin County, California



San Antonio River Improvements Project San Antonio, Texas

Samsung Everland Yong-In, Korea

Brady Town Square and Streetscape Tulsa, Oklahoma

Village of Woodbridge Irvine, California

Newport Coast Newport Beach, California

Mare Island Redevelopment Vallejo, California

Pokrovsky Hills Moscow, Russia

Boca West Boca Raton, Florida

Mountain House Mountain House, California

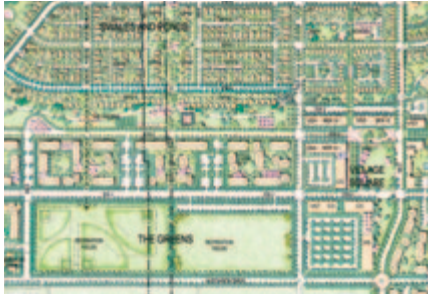
Cornell University East Hill Village Ithaca, New York

Kunming Horticultural Exposition Eco-Communities

Kunming, China

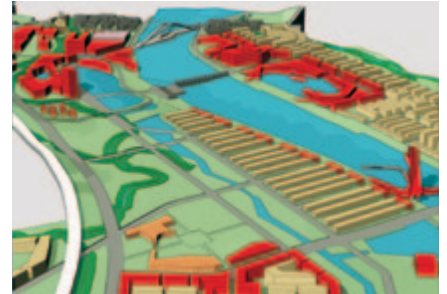
Shenzhen Bay Coastline Park Shenzhen, China

Planning



“SWA is the most efficient, creative shop I have ever worked with. They always come through with top-level work and really high efficiency and value.”

Kenneth K.W. Ma, President, Broadmore Properties



[Lake Houston Wilderness Park](#) Houston, Texas

[UC Davis West Village](#) Davis, California

[Magee Ranch](#) Danville, California

[Tejon Ranch](#) Los Angeles, California

[Alphaville Lagoa dos Ingleses](#) Nova Lima, Brazil

[Al Wasl](#) Riyadh, Saudi Arabia

[Anning River](#) South Miyi County, China

[Baytown Nature Center](#) Baytown, Texas



Urban Design

"SWA was selected by the city of Las Vegas to be urban designer and landscape architect for the downtown Lewis Avenue Corridor project.

We were very pleased with the results, and the pedestrian thoroughfare is a favorite among workers and tourists."

[Mayor Oscar B. Goodman, City of Las Vegas](#)

Scope of Services

- Urban Planning
- Urban Land Use and Building Massing Studies
- Urban Landscape Design
- Urban Redevelopment
- Design Guidelines

Successful urban design encompasses the infrastructure of an urban environment, synthesizing buildings, streets, corridors and natural systems into a cohesive, fully functional, and aesthetically unified whole. SWA has designed new cities, districts, neighborhoods and waterfronts, as well as the specific components of urban environments, including plazas, parks, promenades and urban streetscapes. As designers with a sophisticated understanding of the urban landscape, we are particularly adept at integrating nature into cities, using the available resources as the foundation and framework from which livable, high-density environments can flourish. SWA's international reputation in urban planning and design has evolved from our history of successful projects.



Urban Design



“SWA brings the highest quality urban planning and design to our communities. Their sincere and enabling approach to environmental stewardship will better position our projects for long-term, sustainable success.”

Randy Sater, President, StoneBridge Properties, LLC



Anaheim Resort District Anaheim, California

Lewis Avenue Corridor Las Vegas, Nevada

Burj Dubai Dubai, UAE

Hangzhou Hubin Redevelopment Hangzhou, China

North Bund Riverside Shanghai, China

2010 Asian Games Guangzhou, China

Dallas West End Historic District Dallas, Texas

Marinaside Crescent Vancouver, Canada



[Cotswold 2000](#) Houston, Texas

[Qingpu New Town](#) Shanghai, China

[Santana Row](#) San Jose, California

[Tangjia Bay Waterfront Community](#) Zhuhai, China

[Da Meisha](#) Shenzhen, China

[Filinvest Corporate City](#) Metro Manila, Philippines

[Kaohsiung Waterfront](#) Kaohsiung, Taiwan

[Katy Trail](#) Dallas, Texas

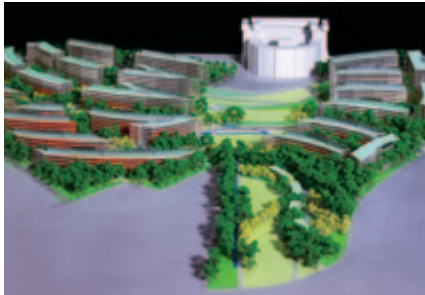
[San Diego Embarcadero](#) San Diego, California

[Monterrey Open Space Plan](#) Monterrey, Mexico

[Houston Uptown Streetscape](#) Houston, Texas

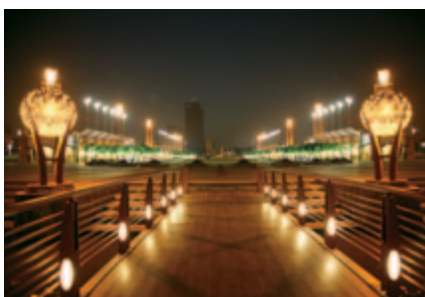
[Luohu Land Port and Train Station](#) Shenzhen, China

Urban Design



“We found that SWA designers have the capability of bringing great vision and beautiful imagery to a project site, optimally and quickly. We sincerely hope SWA will contribute even more to the planning and design process of Chinese cities and other cities around the world.”

Xu Xiaowei, Hunan Joyon Real Estate Co., LTD



Horizon Paris Marne-la-Vallée, France

Long Beach Shoreline Plan Long Beach, California

City Creek Salt Lake City, Utah

Nanhai Citizen's Plaza Nanhai, China

World Wide Center New York, New York

Shunde New City Shunde, China

Victoria Gardens Rancho Cucamonga, California

Foundry Square San Francisco, California

Partial Client List

AC Martin Partners	City of Shanghai, China	Guangdong Nanhai Planning Bureau
Adrian Smith + Gordon Gill Architecture	City of Shenzhen, China	Guangdong Wuyan Enterprises
Alameda County	City of Tempe, AZ	Guangzhou Urban Planning & Design
Alamo Architect	Construct Market Invest	Hangzhou Hubin Commerce & Tourism
Aliana Development Company	Cornell University Real Estate	Harris County Flood Control District
Anaheim Redevelopment Agency	Cypress Lawn	Harris County Improvement District
Altoon + Porter Architects	Dai Nippon Printing	Health Care Japan Co., Ltd.
BAR Architects	Dalian Shengding Development Ltd.	Hillwood Development
Bing Thom Architects	Dar Al-Handasah	Hines Interests
Boeing Realty	De Stefano & Partners	HKS, Inc.
Brown & Root, Inc.	Disney Development	HNTB Corporation
Buffalo Bayou Partnership	DMB Associates	Hobbs + Black Architects
Callison Architecture	DMJM + N	Hnedak Bobo Group
Carrier Johnson	ED2 International	HOK
Catellus Development Corp.	ELS	Hornberger Worstell & Associates
Centex Destination Properties	Ellerbe Beckett	Houston Downtown Management District
Chengdu OCT	Emaar Properties PJSC	Howard Hughes Corporation
Citation Homes	Exxon Mobil	Huntington Memorial Hospital
City of Beverly Hills, CA	F+A Architects	Hyatt
City of Chicago, IL	Federal Realty Investment Trust	The Irvine Company
City of Dallas, TX	Fisher Friedman Architects	Jerde Partnership
City of Glendale, CA	Filinvest Alabang, Inc.	JWDA Architects
City of Houston, TX	Forest City Development	Kaufman & Broad
City of Las Vegas, NV	Foshan Urban Planning Bureau	Korth Sunseri Hagey Architects
City of Livermore, CA	Four Seasons Hotels and Resorts	Kume Sekkei Co., Ltd.
City of Los Angeles, CA	Friends of Hermann Park	Lennar
City of New York, NY	Friends of Katy Trail	Limitless LLC
City of Okayama, Japan	Friendswood Development	Lowe Enterprises
City of San Antonio, TX	General Growth Properties	LPA, Inc.
City of San Diego, CA	Gensler	Macguire Thomas Partners
City of San Francisco, CA	George Kaiser Family Foundation	Morris Architects
City of Santa Rosa, CA	Giant Investment Company	Nakheel
City of Seattle, WA	Greentown Group	NBC Universal

Newhall Land & Farming	Strategic Hotels and Resorts
NBBJ	STUDIOS Architecture
Nikken Sekkei	SunCal Companies
Ningbo Planning Bureau	Taubman
Pei Partnership	Taylor Morrison
Perkins & Will	Texas Department of Transportation
Perkins Eastman Architects	Thannisch Development
Pfeiffer Partners	Thompson Ventulett Stainback
Pyramid Properties	Tishman Speyer Properties
Rey de la Reza Architects	Trammel Crow Company
Rice University	Trendmaker Development
RMW Architecture + Design	Triad Communities
The Rouse Company	Trimark Communities
RTKL Associates	Turner, Collie and Braden, Inc.
RREEF	Unitech Ltd.
Samsung Everland, Inc.	University of California
San Antonio River Authority	University of Arizona
Santa Clara Development	University of Houston
Shanghai Gubei (Group) Co. Ltd.	University of Miami
Shapell Homes	University of the Pacific
Shea Homes, LLC	University of Southern California
Shenzhen Urban Planning & Design	University of Washington
Shimao Group	Uptown Development Authority
Simeon Commercial Properties	USAA Real Estate Co.
Simon Property Group	Walt Disney Imagineering
SIP Planning and Construction	Wilson Meany Sullivan
Skidmore Owings & Merrill LLP	Woodlands Development Corporation
Smith Group	Xiamen Haicang Investment Corp.
Spieker Properties	Yunnan Hort-Expo Xingyun Real Estate Co. Ltd.
Stanford University	Zhuhai Urban Planning Bureau
Stantec Architecture	Zimmer Gunsul Frasca Architects
Stonebridge Properties, LLC	Zhejiang Joyon Real Estate
Steinberg Group	

Selected Awards, from over 600

ASLA - The Landscape Architecture Firm Award, 2005

SWA Group

The ASLA Medal, 2007

William B. Callaway, FASLA

ASLA Community Service Award, 2005

Kevin Shanley, FASLA

ASLA Centennial Medallion

Silicon Graphics Amphitheater Technology Center and Charleston Park; *Mountain View, California; Studios Architecture; 1999*

ASLA Landmark Award

Golden Gate National Recreation Area, *Marin County, California; Calvin Platt; 2005*

ASLA National Award of Excellence

Buffalo Bayou Promenade, *Houston, Texas; Buffalo Bayou Partnership; The City of Houston; Harris County Flood Control District; 2009*

"The Heart of the Park" Hermann Park Reflection Pool, *Houston, Texas; Hermann Park Conservancy; 2005*

Westlake Corporate Campus, *Westlake, Texas; HKS Architects; 2003*

ASLA National Honor Award

Brays Bayou Greenway Framework, *Harris County, Texas; Harris County Flood Control District; 2009*

California Academy of Sciences, *Golden Gate Concourse, San Francisco, California; Renzo Piano, Stantec Architecture; 2009*

Poly International Plaza, *Guangzhou, China; Skidmore, Owings & Merrill LLP; Guangzhou Design Institute; 2009*

Zobon City Sculpture Garden (Zobon City Villa), *Pudong, Shanghai, China; Landmark Development Consulting; Arquitectonica Architects; 2009*

North Lake Region of Chongming Island, *Shanghai, China; Shanghai Urban Planning Administrative Bureau; 2008*

Lite-On Electronic Headquarters, *Taipei, Taiwan; Artech Inc.; Innerscapes Designs, Local Landscape Architect; 2006*

San Antonio River Improvements Project, *San Antonio, Texas; San Antonio River Authority, City of San Antonio, Bexar County Texas, San Antonio River Oversight Committee; 2001*

Silicon Graphics Amphitheater Technology Center and Charleston Park, *Mountain View, California; Studios Architecture; 2001*

SOKA University, *Aliso Viejo, California; Hardy Holzman Pfeiffer Associates; 1997*

ASLA National Merit Award

Lewis Avenue Corridor, *Las Vegas, Nevada; City of Las Vegas; 2003*

Tokyo University Foreign Studies Campus, *Fuchu, Japan; Kume Sekkei Architects; 2003*

Anaheim Resort Urban Design Plans, *Anaheim, California; City of Anaheim, Walt Disney Imagineering; 2001*

Kelsey Seybold Clinic Medical Center Campus, *Houston, Texas; Morris Architects; 2001*

Arizona Center, *Phoenix, Arizona; The Rouse Company; 1999*

Las Ventanas al Paraiso, *Cabo San Lucas, San Jose Del Cabo, Baja, Mexico; HKS Architects; 1999*

Stanford University, DAPER Master Plan, *Stanford, California; 1999*

ASLA Chapter Awards

Buchanan Field, *Contra Costa County, California; Shapell Industries; BAR Architects; 2006*

Buffalo Bayou Promenade, *Houston, Texas; Buffalo Bayou Partnership; The City of Houston; Harris County Flood Control District; 2007*

Classic Residence By Hyatt, *Palo Alto, California; Stanford Management Company; Hyatt Corporation; Steinberg Architects; 2007*

CyFair College, *Cypress, Texas; North Harris Montgomery College District, Gensler Architects; 2006*

Dallas West End Historic District, *Dallas, Texas; Marketplace Developers, Inc.; Turner, Collie and Braden, Engineers; 2000*

Foundry Square, *San Francisco, California; Wilson Equity Office; STUDIOS Architecture, Jim Jennings Architecture; 2006*

Georgia International Plaza, *Atlanta, Georgia; TVS&A Architects; 2000*

Grand Hyatt Mumbai, *Mumbai, India; Lohan Anderson, Architects, Chicago; Gherzi Architects, Bombay; 2007*

Haicang New Town, *Haicang District, Fu-jian Providence, China; Haicang Investment General Corporation; RTKL-Dallas; Shanghai Universal Architects & Engineers; 2003*

Helen's Park, *Houston, Texas; Chase Texas Bank Trust Department. Stella Link Redevelopment Corporation; 2002*

Huntington Memorial Hospital, *Pasadena, California; Henningson, Durham & Richardson & Stephen Wen & Associates, Architects; 1999*

IH30/IH35 Interchange, *Fort Worth, Texas; Turner, Collie and Braden, Engineers; TxDOT; 2001*

International Center Phase III and IV, *Dallas, Texas; Harwood International; DMJM, Los Angeles; GDA, Dallas; 2003*

Kelsey Seybold Medical Center, *Houston, Texas; Morris Architects; 2001*

Lucayan Beach Resort, *Freeport, Grand Bahama Island; Hutchison Lucaya Limited; RTKL Associates, Inc., Dallas, Architects; 2005*

Mayfield, *Fremont California; Santa Clara Development Company; Robson Homes; Woodley Architectural Group; 2007*

Nanhai City Center Song of Seven Winds Park and Citizens Plaza, Nanhai, Guangdong Province, China; Guangdong Nanhai Planning Bureau; 2004

Rublyovo Arkhangelskoye Master Plan, Moscow, Russia; Construct Market Invest; John Thompson and Partners, Architects; 2006

SGI Crittenden, Mountain View, California; Silicon Graphics, Inc.; STUDIOS Architecture; 2006

South Ren-Min Boulevard, Shenzhen, China; City of Shenzhen, Luohu District Municipal Government; China Academy of Urban Planning & Design; 2005

St. Rose Dominican Hospital, Henderson, Nevada; HKS Architects; 2003

Stanford University, Alumni Center, Stanford, California; Stanford University; Hoover Associates, Architects; 2006

Stolt-Nielsen Corporate Campus, Houston, Texas; Stolt-Nielsen Transportation Group Ltd. Gabriel Architects Inc; 2002

Sun City Park Takarazuka, Takarazuka, Japan; Health Care Japan Co., Ltd.; BAR Architects, Asai Architectural Research, Babey Moulton Gue and Booth, Interior Design Architect; 2006

Sun City Yokohama, Hodogaya, Japan; Health Care Japan Co., Ltd.; Perkins Eastman Architects PC; Asai Architectural Research; Hirsch Bedner Interior Design Architect; 2007

Tunica RiverPark, Tunica, Mississippi; Tunica County; Williamson Pounders Architects; 2005

TxDOT Green Ribbon Project, Dallas, Texas; Texas Department of Transportation (TxDOT); 2000

University of the Pacific McGeorge School of Law Campus Plan, Sacramento, California; UOP; Meckel Design Consulting; 2006

Vanke Guangzhou Residential Development, Guangzhou, China; Vanke Real Estate Inc; Skidmore Owings Merrill Chicago; 2006

Williams Square, Las Colinas / Irving, Texas; Southland Investment Company, Skidmore Owings & Merrill, LLP; 2000

ASCE Outstanding Project of the Year

Mountain House New Town, San Joaquin County, California; Trimark Communities, LLC; 2004

Builder Magazine Project of the Year

Santana Row, San Jose, California; Federal Realty Investment Trust; Sandy & Babcock, BAR Architects, Steinberg Group; 2003

NAHB Award

Sun City Plaza Tsukaguchi, Itami City, Japan; Health Care Japan Co., Ltd.; BAR Architects; 2009

National Civil Rights Museum Expansion, Memphis, Tennessee; NCBC Council "Project of the Year," Looney Ricks Kiss Architects; 2003

Sun City Machida, Tokyo, Japan; Half Century More, Inc.; HOK Architects; Dennis Cope, Architect; Hirsch Bedner Associates; 2002

Stanford University, Manzanita Park Undergraduate Housing, Stanford, California; Fisher Friedman Associates, Architects, 1994

Pacific Coast Builders Gold Nugget Award

Canyon Heights, Fremont, California; Builder - Santa Clara Development Company; Robson Homes; Architopia Architects; 2005

Classic Residence By Hyatt, Palo Alto, California; Stanford Management Company; Hyatt Corporation; Steinberg Architects; 2006

Encanto, San Jose, California; Robson Homes, Santa Clara Development Company; Robert Hidey Architects; 2007

Mayfield, Fremont California; Santa Clara Development Company; Robson Homes; Woodley Architectural Group; 2006

Quail Hill, Irvine, California; Irvine Community Development Company; 2002

River Island at Lathrop, Lathrop, California; Califia, LLC, 2003

Santaluz, San Diego County, California; DMB Development, Taylor Woodrow Homes, Robert Hidey Architects; 2001

Shady Canyon, Irvine, California; Irvine Community Development Company; 2003

UC Berkeley Albany Village, Berkeley, California; Fisher-Friedman Associates; 2002

Woodbury, Irvine, California, Irvine Community Development; BAR Architects; 2006 & 2004

SCUP/AIA National Merit Award

CyFair College, Cypress, Texas; North Harris Montgomery College District, Gensler Architects; 2004

ULI Global Award for Excellence

Beijing Finance Street, Beijing, China; Skidmore, Owings & Merrill LLP; Beijing Street Holding Company, Ltd.; 2008

Hangzhou Hubin Redevelopment, Hangzhou, Zhejiang, China; Hangzhou Hubin Commerce & Tourism Company Ltd.; 2005

ULI Award for Excellence: Asia Pacific

Beijing Finance Street, Beijing, China; Skidmore, Owings & Merrill LLP; Beijing Street Holding Company, Ltd.; 2008

Luohu Land Port and Train Station, Shenzhen, China; Shenzhen Urban Planning and Land Administration Bureau; Chinese Academy of Planning and Urban Design (CAUPD) Architects; 2006

ULI Award for Excellence: The Americas

California Academy of Sciences, Golden Gate Concourse, San Francisco, California; Renzo Piano, Stantec Architecture; 2009

Victoria Gardens, Rancho Cucamonga, California; Forest City Development; Altoon & Porter, Elkus Manfredi, Kann & Associates and Field Paoli Architects; 2006

The Offices of SWA

Sausalito

2200 Bridgeway Boulevard
Post Office Box 5904
Sausalito, California
94966-5904
tel: 415.332.5100
fax: 415.332.0719
sausalito@swagroup.com

Laguna Beach

580 Broadway
Suite 200
Laguna Beach, California
92651-4330
tel: 949.497.5471
fax: 949.494.7861
laguna@swagroup.com

Houston

1245 West 18th Street
Houston, Texas 77008-3342
tel: 713.868.1676
fax: 713.868.7409
houston@swagroup.com

Dallas

2211 North Lamar
Suite 400
Dallas, Texas
75202-1080
tel: 214.954.0016
fax: 214.954.1720
dallas@swagroup.com

San Francisco

55 New Montgomery Street
Suite 888
San Francisco, California
94105-3446
tel: 415.836.8770
fax: 415.836.8771
sanfrancisco@swagroup.com

Los Angeles

811 West 7th Street
Suite 430
Los Angeles California
90017-3415
tel: 213.236.9090
fax: 213.236.9091
losangeles@swagroup.com

Shanghai

(Representative Office)
V10 14F Jinjiang Xiangyang Bldg.
No. 993 Nanjing West Road
Shanghai 200041, China
tel: 86.21.3217.0603
fax: 86.21.6272.7355
shanghai@swagroup.com

United Arab Emirates

(Branch Office)
Executive Suite
PO Box 120811
Sharjah, U.A.E.
uae@swagroup.com

www.swagroup.com





www.swagroup.com