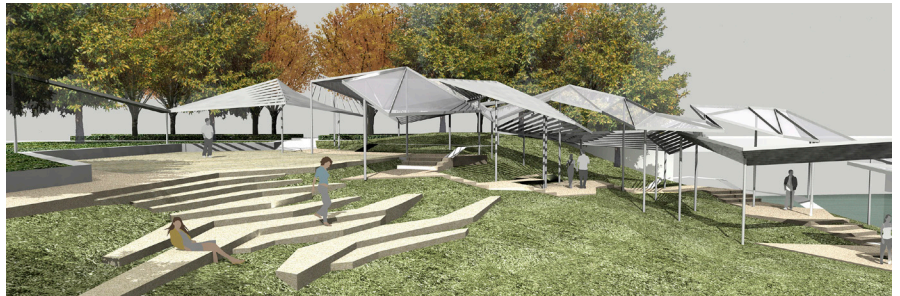
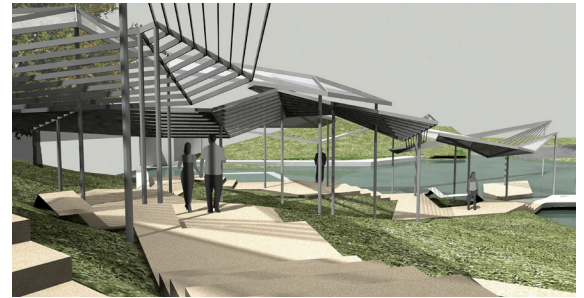
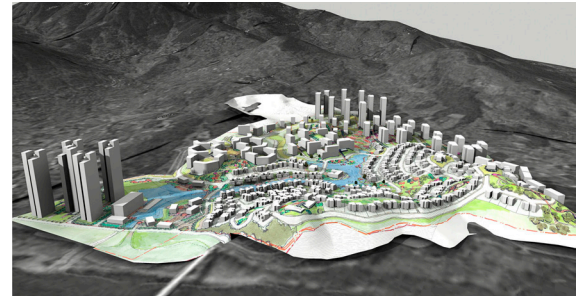


## Fuzhou Vanke Yongtai



The Yongtai project located inside the Red Cliff Scenic Area borders the Dazhang River and consists of a 45-hectare watershed area surrounded by 12 small hills. The project includes a boutique hotel, a shopping street, clubhouses, residential high-rises, apartment buildings, townhouses and detached homes.

The overall project plan calls for housing clusters that follow the natural site topography. The central lake area of the main watershed basin is preserved and leveraged as a public open space that unifies the entire site. Sub-watersheds are designed as neighborhood parks with connections to the central lake area. Hilltops and ridges are incorporated into the neighborhood parks via an extensive trail network to form a larger recreational system for the residents.

### Location

Fuzhou, China

### Client

Fuzhou Yongtai Youxin Real Estate Co., Ltd.

### SWA Scope

Master Plan  
Landscape Architecture

### Size

Site: 45 hectares

“Weaving Stitching” is the main design idea for this project and is applied to the overall framework of an interconnecting public space network supported by natural topography and waterways and also presented at the level of physical/special design. Paths, walkways, ramps, bridges, lang, seat-walls and water features are woven to form the unique landscape character of the design.