

# SWA

Landscape Architecture

Planning

Urban Design

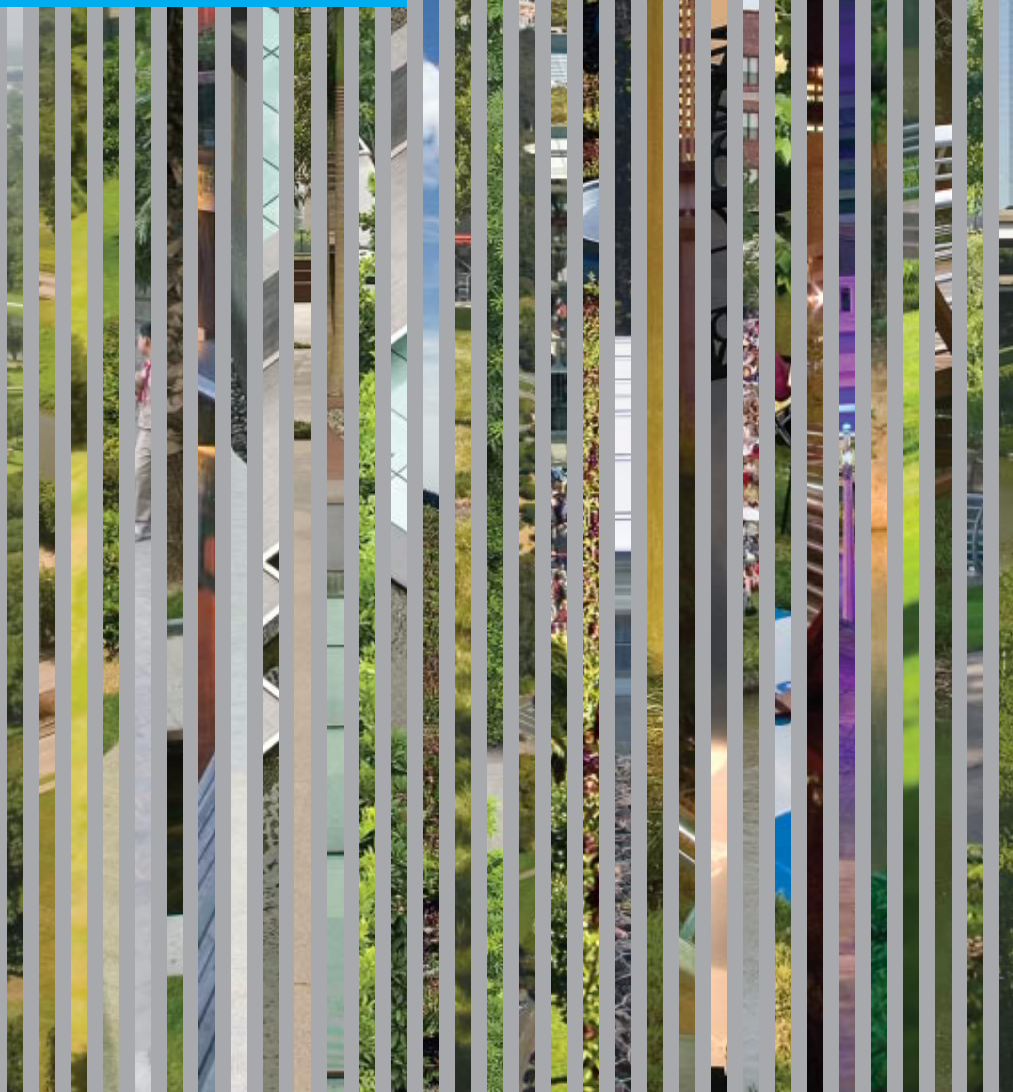
///

Five 2009 National Honor Awards from the  
American Society of Landscape Architects

///

+ 11 other prestigious 2009 awards

///



Even in this difficult year of 2009, and only halfway through the year, we have been privileged to see some of our past and current projects receive over 16 national and regional awards. With many of these projects we have been part of a larger team, and so there were many others who were instrumental in helping these projects to receive these high honors. We have had the enviable opportunity to work with some of the world's best public and private sponsors of projects, and some of the world's most talented architects, engineers and other professionals—many of whom are our direct clients.

As professionals involved in landscape architecture, planning and urban design, we are in a unique position to make a difference to the future of the world. As all of us grapple with the serious issue of creating a more sustainable and habitable world, we have to ask ourselves if we are so focused on simply reducing environmental impacts that we are not looking beyond to design that is both restorative and regenerative. Zero environmental impact is a very worthy goal, but what about creating something that goes beyond the neutral—something that contributes value environmentally, socially, economically and aesthetically? My hope is that the award-winning projects displayed in this booklet, are heading our own firm in that direction.

Kevin Shanley, PRESIDENT

///

## SWA Awarded Projects 2009

///



- 1**  
**California Academy of Sciences**  
San Francisco, CA
- 2**  
**Buffalo Bayou Promenade**  
Houston, TX
- 3**  
**Brays Bayou Greenway Framework**  
Harris County, TX
- 4**  
**Zobon City Sculpture Garden**  
Shanghai, China
- 5**  
**Poly International Plaza**  
Guangzhou, China  
///
- 6**  
**Classic Residence By Hyatt**  
Palo Alto, CA
- 7**  
**Lake Houston Wilderness Park**  
Houston, TX
- 8**  
**Four Seasons Hotel Pool Terrace Renovation**  
Houston, TX
- 9**  
**Arabian Canal**  
Dubai, UAE
- 10**  
**Ningbo East New Town Eco-Corridor**  
Ningbo City, China
- 11**  
**Sun City Plaza Tsukaguchi**  
Itami City, Japan
- 12**  
**Sun City Showa Kinen Koen**  
Tachikawa, Japan



# California Academy of Sciences

San Francisco, CA

ASLA Honor Award in General Design

ASLA Northern California Chapter Honor Award—Sustainability

ULI Award for Excellence: The Americas

///

"Ingenious. A technical masterpiece.

The landscape architect has provided so many lessons here in how the project meets the ground in a completely direct, simple, and beautiful way. So clever and creative."

—2009 Professional Awards Jury

One of San Francisco's first sustainable building projects, the new California Academy of Sciences supports a stunning 2.5-acre green roof. Emphasizing habitat quality and connectivity, the project has received LEED Platinum certification. The Renzo Piano Building Workshop (RPBW) invited SWA Group and horticultural consultant Rana Creek Living Architecture to collaborate on the design of the living roof.

SWA Group provided full landscape architectural services for the living roof and the larger site. RPBW's concept lifts the natural landscape three stories up and places it on top of the building. San Francisco's mild climate along with the Academy's commitment to environmental protection, provided an ideal opportunity to incorporate sustainable design strategies into the construction plan. Not only was energy efficient heating and cooling considered, but also green building materials, reduced site disturbance, seasonal irrigation and energy generation.

The California native plants that carpet the building were chosen for their adaptability to the Bay Area's seasonal irrigation cycle. The plants were also selected to attract local butterflies, birds and insects, some of them endangered. The roof is designed to thrive on natural, not mechanical irrigation sources. Additionally, the drainage system recycles all storm water runoff back into the water table. Photovoltaic cells line the roof perimeter, collecting solar energy to help power the Academy.

As part of its commitment to sustainability, the Academy has reduced the building's physical footprint and the surrounding pavement by approximately 1.5 acres. This land has been re-established as park gardens.



## SWA scope

Landscape Architectural Services

///

## SWA project team

John Loomis  
Lawrence Reed  
Zachary Davis  
Michael Odum  
Sergio Lima  
Masato Kametani  
Rick Story

///

## Owner

California Academy of Sciences

///

## Architects

Renzo Piano Workshop; Stantec Architecture

///



# Buffalo Bayou Promenade

Houston, TX

ASLA Award of Excellence in General Design



“What being a landscape architect is all about. All awards should inspire and teach and this project sends a great message on scale, proportion, materials, and perseverance. So many cities have these opportunities. By capturing open space under a labyrinth of highways the landscape architect has made the intimidating unimtimidating. It sends a great message for the future of parks.”

—2009 Professional Awards Jury

The Buffalo Bayou Promenade is one of the largest investments in public parkland ever carried out in Houston. It converts a neglected, trash-soaked eyesore, passed over by entangled freeways and bridges into 3,000 linear feet of urban park—adding 23 acres of parkland to Houston’s inner city. The project was the result of a public/private partnership to revitalize downtown’s urban waterfront. Re-engineered sloping of banks and a series of stairs and ramps re-connect people to the bayou (with 12 new street-to-bayou entryways and a major north-to-south pedestrian bridge).

The natural channel and the soil along its banks have been stabilized through the use of gabions and the anchoring of 14,000 tons of rock and recycled concrete. Weeds and other invasive plants have been replaced by 287,000 plants (including native perennials, groundcover and 641 trees). All lighting, plantings and walkways are designed to withstand the natural, periodic flooding of the bayou.

The project provides continuous pedestrian and bike trails, public art, and special maintenance and safety provisions. The lighting system provides glowing orbs that follow the monthly phases of the moon: lights are blue when the new moon occurs and gradually shift to white as the full moon emerges. The waterway is now cleaner and teems with ducks, herons, turtles and fish.

The Corps of Engineer’s existing HEC model was used to ensure that floodwater conveyance would not be compromised by the improvements. This new public space provides national prominence conducive to commercial, recreational, cultural and civic vitality.



**SWA scope**

Master Planning,  
Landscape Architecture



**SWA project team**

Kevin Shanley  
Scott McCready  
Lance Lowrey  
Rhett Rentrop  
John Brandt



**Sponsor**

Buffalo Bayou Partnership





# Brays Bayou Greenway Framework

Harris County, TX

ASLA Honor Award, Analysis and Planning

///

"A monumental project that offers a beautiful solution. It highlights the importance of water and addresses the kinds of challenges our cities are facing across the nation."

—2009 Professional Awards Jury

The Greenway Framework for the Brays Bayou Corridor in Houston, Texas, expands the flood-prevention strategies for Brays Bayou into an environmentally and culturally regenerative design and implementation strategy for a dynamic urban greenway. This framework presents multifaceted solutions that simultaneously restore the surrounding habitat and offer urban recreation and education. It also identifies concurrent improvements planned by other entities in the Brays Bayou Corridor that, as a whole, will elevate Brays Bayou to national status as a large-scale, economically sustainable open-space destination.

The Framework's broad goals include:

- ▶ **Reducing** flood damage along the bayou
- ▶ **Creating** regional open space and connections
- ▶ **Improving** the ecology of the project corridor
- ▶ **Serving** citizens living along the bayou

The Framework simulates all possible trail alignments and connections as well as additional recreational and open-space amenities along Brays Bayou for more than 31 miles. As a capital planning tool, the Framework is designed to provide guidance to public and private partners, ensuring that as portions of the target programs and projects are initially implemented, the linkages and other objectives of the strategy are realized over time.

The comprehensive implementation of program elements leads to a vision for the greenway that moves beyond its individual components and toward the creation of a cherished regional corridor.



## SWA scope

Master Planning

///

## SWA project team

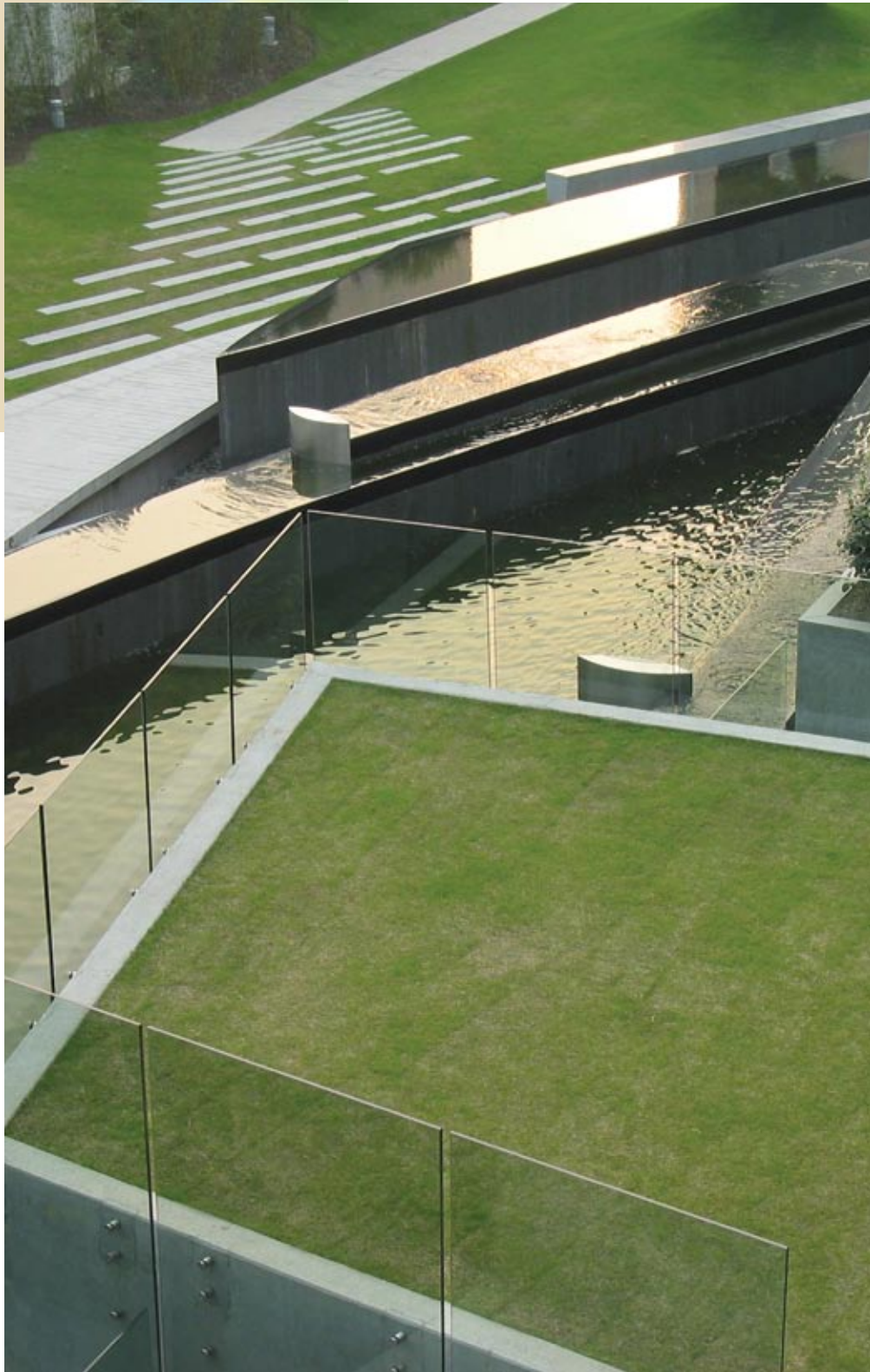
Kevin Shanley  
James Vick  
Lance Lowrey  
Scott McCready

///

## Owner

Harris County Flood Control District

///



# Zobon City Sculpture Garden

Shanghai, China

ASLA Honor Award in General Design

///

"A gorgeous project. Beautifully crafted, down to the very last detail."

—2009 Professional Awards Jury

The Zobon City Sculpture Garden lies at the center of a 5,000 unit multi-family residential infill development in the Pudong district of Shanghai, China. The design objective was to create an innovative model for multi-family habitation that integrates art, landscape and architecture in ways that make dense, urban living more sustainable. On a mere 0.6 hectare site, the landscape architecture expresses three moments which celebrate the inherent, and often invisible, beauty of the city:

- ▶ The Huang-Pu Abstraction garden mimics the seasonal flooding along the banks of the Pu River by creating a 2.5 meter tall stacked, glass fountain (flood level) that cascades water along its length. A public plaza provides informal seating and a place to view the water feature.
- ▶ The Cognitive Garden is designed to offer residents and visitors a place of respite for meditation and relaxation and is infused with colorful planting, raked gravel, and white sound from a simple fountain.
- ▶ The Sky Garden is the centerpiece of the project. It attempts to capture what is left of the diminishing skyline by reflecting it directly on to itself through an elliptical-shaped reflecting pond filled with Koi fish and ringed by native plantings and aeration terraces. It is also a gesture towards Shanghai's freeway infrastructure and land subsidence through its curving forms and elevation changes. The outdoor program for this area includes places for tai-chi, eating, small gatherings and walking/viewing.



## SWA scope

Schematic Design; Design Development

///

## SWA project team

Gerdo Aquino

Ying Yu Hung

///

## Developer

Landmark Development Consulting Company

///

## Architect

Arquitectonica Architecture

///



# Poly International Plaza

Guangzhou, China

ASLA Honor Award in General Design

ASLA Northern California Chapter Merit Award

///

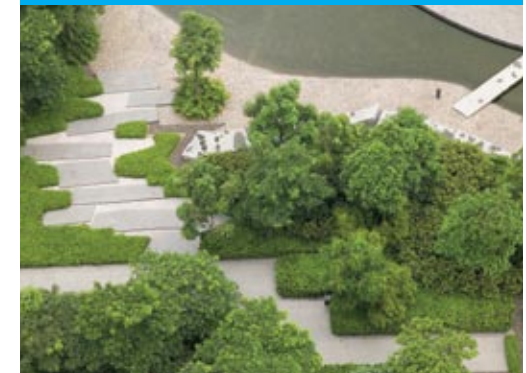
"Crazy beautiful. It's refined, with exquisite detailing. A beautiful urban move to embrace the temple. It shows respect for Chinese garden legacy, but in a contemporary way. Surreal but solid."

—2009 Professional Awards Jury

SWA provided landscape architectural services for this high-rise office complex with accompanying retail. The site plan forms a series of gardens and plazas. The design seeks to integrate the southern Chinese landscape traditions with a modern sensitivity toward local context, climate, flora and the architect's modern architecture. Tall, continuous tree canopies in combination with water features help to moderate the climate in providing shade and capturing cooling breezes for exterior spaces.

Approximately one-third of the site landscape is developed as roof gardens. To accommodate pedestrian usage, dense tree plantations establish an extensive tree canopy that shades much of the ground plane, significantly reducing the heat island effect.

In response to the client's appreciation for Chinese gardens, the central garden reveals a contemporary sensibility toward classical Chinese gardens. Within the garden, the linear fountain becomes a glazed fountain trough, allowing natural light down to exhibition spaces below. The wood terrace associated with a bosque of palm trees serves as a central gathering space, while also protecting a continuous soil layer below. Water released from the formal fountain basin begins a sequential water-garden journey. Upon release, water is first revealed as a water court, then as a meandering watercourse within a stone garden, and next by flooded basins spliced with stainless weirs—until it finally spills out onto the stepped basins, fields, and river beyond.



## SWA scope

Schematic Design; Design Development

///

## SWA project team

Jim Lee

I-Hsien Lee

Ye Luo

Aleksandra Dudukovic

Ying Hu

Paul Stevenson

///

## Owner

Poly Real Estate Group

///

## Architect

Skidmore, Owings & Merrill, LLP

///

**Additional Awarded Projects 2009**

///

**Classic Residence By Hyatt**

Palo Alto, CA

///

The Arnold Soforenko Award for Extraordinary Contributions to the Urban Forest

///

**SWA project team**

John Wong, Mary Gourlay, Rick Story, John Loomis, Sergio Lima, Tom Fein, Suvarna Apte

///

**Developer:** Stanford University Real Estate

**Architect:** Steinberg Architects

**Lake Houston Wilderness Park**

Houston, TX

///

ASLA Texas Chapter Award of Excellence—Analysis and Planning

///

**SWA project team**

Kevin Shanley, James Vick, Matt Baumgarten, Julia Mandell, Kerri Mueller

///

**Owner:** City of Houston

**Four Seasons Hotel Pool Terrace Renovation**

Houston, TX

///

ASLA Texas Chapter Honor Award

///

**SWA project team**

John Cutler, Chuck McDaniel, Rhett Rentrop, Brad Cowan, Josh Lock

///

**Client:** Four Seasons Houston



**Arabian Canal**

Dubai, UAE

///

ASLA Texas Chapter Merit Award—Analysis and Planning

///

**SWA project team**

Kinder Baumgardner, Ana Castaneda, John Brandt, Geoff Turnbull, Jaewoo Chung, Travis Hawkins, Alex Robinson, Jessica Bacorn, Ricardo Supiciche, Youngmin Kim, Christopher Morton, Lynn Kiang, Shi Park, Gerdo Aquino

///

**Developer:** Limitless, LLC



**Ningbo East New Town Eco-Corridor**

Ningbo City, China

///

ASLA Northern California Chapter Honor Award—Analysis, Research, Planning and Communication

///

**SWA project team**

Hui-Li Lee, Roy Imamura, Scott Chuang, Kathy Sun, Jack Wu, Chih-wei Lin, Chih-Wei (G.V.) Chang, Huiqing Kuang

///

**Client:** Ningbo Planning Bureau



**Sun City Plaza Tsukaguchi**

Itami City, Japan

///

NAHB Best of 50+ Judge's Special Innovation Award

NAHB Best of 50+ Best Large CCRC Gold Award

///

**SWA project team**

John Loomis, Jim Lee, Masato Kametani, Aleksandra Dudukovic

///

**Owner:** Health Care Japan Company

**Architect:** BAR Architects



**Sun City Showa Kinen Koen**

Tachikawa, Japan

///

NAHB Best of 50+ Best Large CCRC On the Boards Gold Award

///

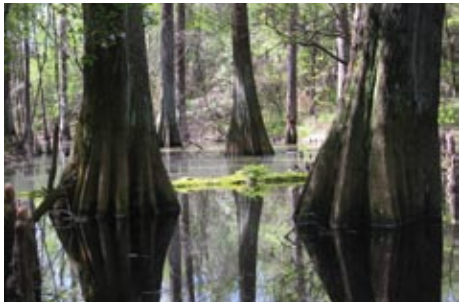
**SWA project team**

John Loomis, Masato Kametani, Christina Probst, Caroline Kim, Shuichiro Hayashi

///

**Owner:** Health Care Japan Company

**Architect:** BAR Architects



**Photo Credits:** California Academy of Sciences: Tom Fox /// Buffalo Bayou Promenade: Tom Fox /// Brays Bayou Greenway Framework: Bill Tatham /// Zobon City Sculpture Garden: Gerdo Aquino, Tom Fox /// Poly International Plaza: Tom Fox /// Classic Residence By Hyatt: Tom Fox /// Lake Houston Wilderness Park: Kevin Shanley /// Four Seasons Hotel Pool Terrace Renovation: Bill Tatham /// Sun City Plaza Tsukaguchi: Tom Fox

This brochure is printed on New Leaf Paper Reincarnation Matte, made with 100% recycled fibers, 50% post-consumer waste, processed chlorine free and manufactured with electricity that is offset with Green-e® certified renewable energy certificates. By using this environmentally friendly paper, SWA has saved the following resources: 4 fully grown trees /// 851 gallons of water /// 2,000,000 Btu of energy /// 186 pounds of solid waste /// 314 pounds of greenhouse gasses. ©2009 SWA Group /// design: Afuldish & Warinner



**S W A**

## **Offices of SWA**

### **Sausalito**

415.332.5100 TEL

415.332.0719 FAX

sausalito@swagroup.com

### **Laguna Beach**

949.497.5471 TEL

949.494.7861 FAX

laguna@swagroup.com

### **Houston**

713.868.1676 TEL

713.868.7409 FAX

houston@swagroup.com

### **Dallas**

214.954.0016 TEL

214.954.1720 FAX

dallas@swagroup.com

### **San Francisco**

415.836.8770 TEL

415.836.8771 FAX

sanfrancisco@swagroup.com

### **Los Angeles**

213.236.9090 TEL

213.236.9091 FAX

losangeles@swagroup.com

### **Shanghai**

011.86.21.3217.0603 TEL

011.86.21.6272.7355 FAX

Shanghai@swagroup.com