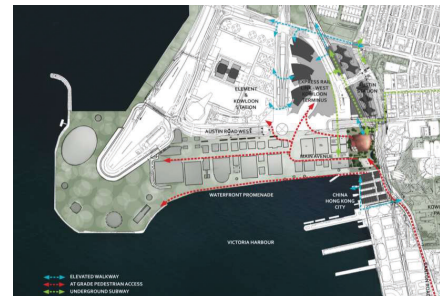
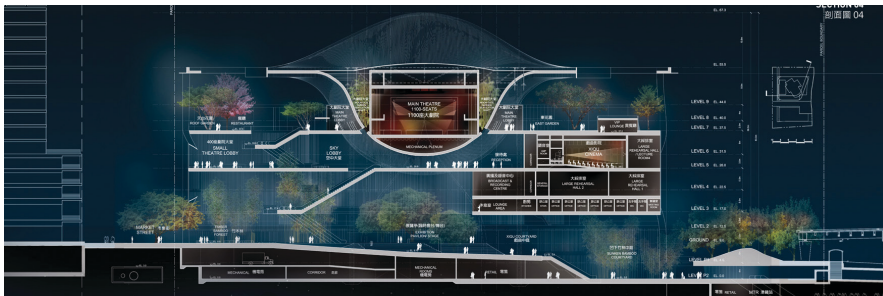


## XIQU Centre



The Xiqu Centre, a project with theater and performance spaces, will be the first manifestation of the West Kowloon Cultural District (WKCD), a vital new cultural precinct that has come about as the result of many years of conceptualization and planning.

Xiqu Centre design is a journey of transition from an urban site to the cultural landscape. From the Xiqu Courtyard, patrons travel by escalators through vertical gardens building a sense of wonder, anticipation and excitement. Landscape and theatre experience are closely intertwined with majestic views towards Victoria Harbor. Inspired by the concept of flow or qi and the flow is created with a curvilinear plan and form. The exterior façade is also curved three dimensionally and arched openings are strategically located at all four corners forming urban corridors that capture the flow

### Location

Hong Kong, China

### Client

West Kowloon Cultural District Authority of the Hong Kong Special Administrative Region  
Bing Thom Architects

### SWA Scope

Competition  
Conceptual Design

### Size

25 acres / 10 hectares

### Architect/Consultants

Bing Thom Architects, Vancouver, British Columbia  
Ronald Lu & Partners, Hong Kong  
Fisher Dachs Associates, Theater Design, New York  
Sound Space Design, Theater Acoustics, London

of pedestrians, at multiple levels, from the neighboring transportation and commercial hub into the Centre and the Cultural District.