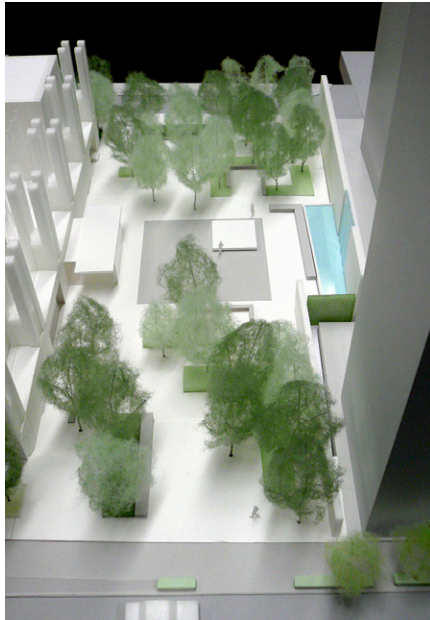
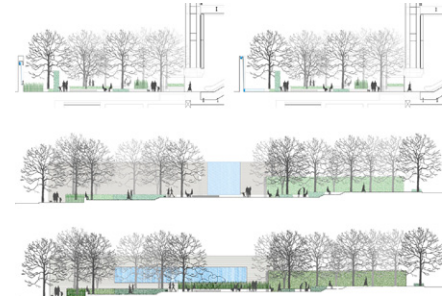
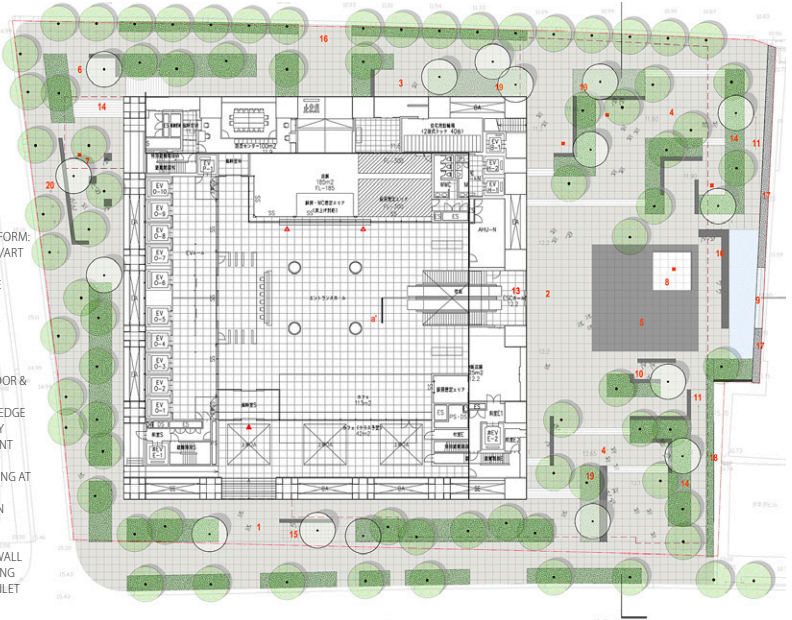


# Motoakasaka Kajima



**PLAN INDEX**

- 01 OFFICE SOUTH ENTRANCE
- 02 OFFICE EAST ENTRANCE
- 03 RESIDENTIAL ENTRANCE
- 04 ENTRY TERRACE
- 05 MAIN-CENTRAL PLAZA
- 06 STREET CORNER PLAZA
- 07 WEST PLAZA & SEATING
- 08 FLOATING PLATFORM: SEATING/STAGE/ART BASE
- 09 WATER FEATURE
- 10 SEATWALL
- 11 HC RAMP
- 12 POTENTIAL ART DISPLAY
- 13 CONTINUOUS PAVING AT INDOOR & OUTDOOR
- 14 CLIPPED LOW HEDGE
- 15 BUILDING ENTRY RESTING / ACCENT POINT
- 16 REUSE OLD PAVING AT DRIVEWAY
- 17 VERTICAL GREEN WALL TO BE DETERMINED
- 18 GREEN HEDGE WALL
- 19 SPECIAL PLANTING
- 20 EMERGENCY TOILET LOCATION



This urban redevelopment project is sited at the former Kajima Construction Corporation headquarters. Mid-rise twin towers will be replaced with a 150m tall high-rise building with Class-A office space and high-end apartments in the upper floors. SWA's design includes a formal entry plaza with a water feature and provides much needed green space in the highly urban, dense neighborhood in the middle of metropolitan Tokyo. The initial concept is of the building growing out of a forest. Under this forest, there are several different spaces offering intimate gathering areas with seating and a main plaza space with water wall feature creating soothing sounds to reduce traffic noise from a busy four-lane throughway in front of the building.

**Location**

Motoakasaka, Tokyo, Japan

**Client**

Landscape Design Inc.

**SWA Scope**

Schematic design and Design development services

**Size**

Site: 5120 m<sup>2</sup>

Bldg: 2265 m<sup>2</sup>

**Architect**

Kajima Architectural Design Department