

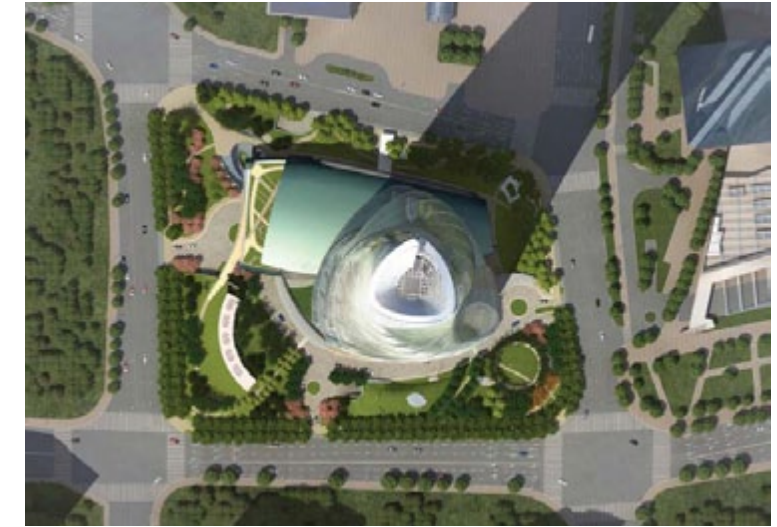
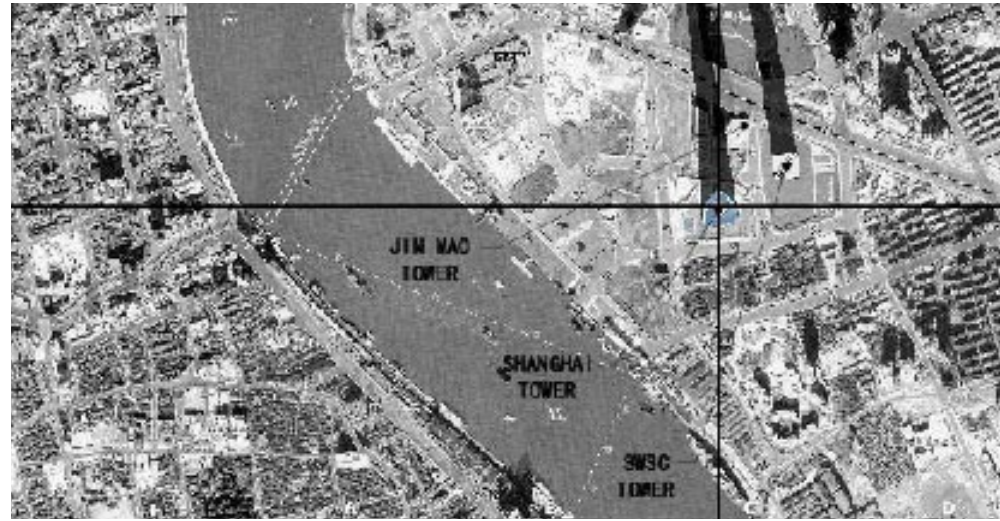
Shanghai, China  
**SHANGHAI TOWER**

JOB NUMBER  
 GNSn813

SWA OFFICE  
 Sausalito

SWA PROJECT TEAM  
 John Wong, Joe Newton, Scott Chuang,  
 Hwei-Lyn Liu, Jack Wu, Sarah Peck,  
 Luis Kao, Chih-Wei Chang

PROJECT TYPE  
 Landscape Architecture



CLIENT Gensler

GREATER PROJECT TEAM  
 Architect - Gensler  
 LDI - The Architectural Design & Research  
 Institute of Tongji University  
 Structural - Thornton Tomasetti  
 MEP - Cosentini Associates

SIZE  
 Project - 30,368 SM  
 Building - 12,921 SM  
 Landscape: 17447 SM (excluding interior  
 landscape design & roof garden)

GREEN/LEED-RATED DESIGN ELEMENTS  
 LEED Gold Certification

**THE BIG IDEA**

The landscape design of Shanghai Tower creates a "Tower Park" that complements the architecture's concept, form and function and reinforces the project's fundamental principles of Nature, Humanity and the Future. The landscape reflects historic Chinese architecture of temples, towers and palaces surrounded by nature.

**North Plaza**

Along the northeastern portion of the block, a major pedestrian plaza incorporates an informal grove of ginkgo trees, planted within a continuous grass panel. This plaza establishes a shaded welcome to the retail podium and offers an appealing foreground to the Jin Mao Tower to the north and Shanghai World Financial Center to the east. The north and east corners of the site open up to better receive pedestrian flow to the retail podium as well.

**Greenbelt**

Along the western and southern portions of the site, a more informal "greenbelt" wraps the hotel, office, and event center portions of the project with a dense, park-like planting of canopy trees over an undulating landscape of shrubs and groundcovers. This greenbelt connects visually to public open space parks located to the north, helping to tie the overall project to its urban context, including the two neighboring towers of Jin Mao and Shanghai World Financial Center.

**Event Center Roof Garden**

The Event Center Roof Garden is an expression of the sunken garden below. Paths cross a series of raised planters, some of which are integrated with seat walls. Views are directed to the Huangpu River and the skyline beyond.

**Sunken Garden**

In the northwest corner, the greenbelt terminates in a sunken garden that creates a special oasis for the celebration of arrival and procession to the lower and upper retail levels. A large paved plaza at the corner welcomes pedestrian traffic coming from the surrounding neighborhood. Major water elements here include a water cascade from B1, culminating in a water pool at B2 level. A bamboo island within the water pool offers a link to the greater landscape of Shanghai Tower. Informal seating within the bamboo grove and the water features at the B2 level provides a space of respite and relaxation.

**Drop-offs**

Water features also distinguish two of the project's drop-offs, located at the conference/hotel entry in the east and the VIP entry in the west. These features provide convenient turnarounds and circulation options along the project's east-west driving route.

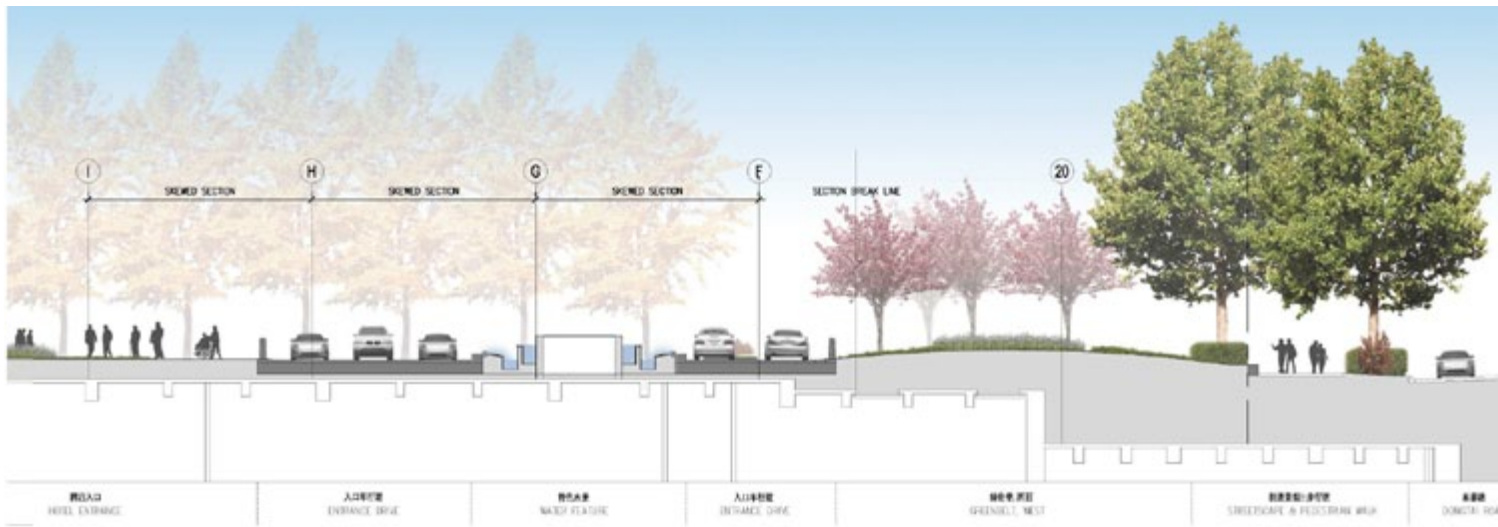
**Atrium Gardens**

Within the Shanghai Tower itself, the Atrium Gardens are in sync with the concepts of the architecture and exterior landscape. Nature, humanity and sustainability are developed and in sync with the interior's concepts for the elements of Water, Earth, Wood, Fire and Gold. Occupying the lobby spaces between the exterior and interior curtainwalls, these natural sky gardens will help to celebrate major entries to the retail, hotel, and office sectors. Distinctive custom planters house assemblages of plant material that will be repeated in a vertical pattern, drawing the eye skyward and accentuating the open-ended spiral of Shanghai Tower's unique spatial form.

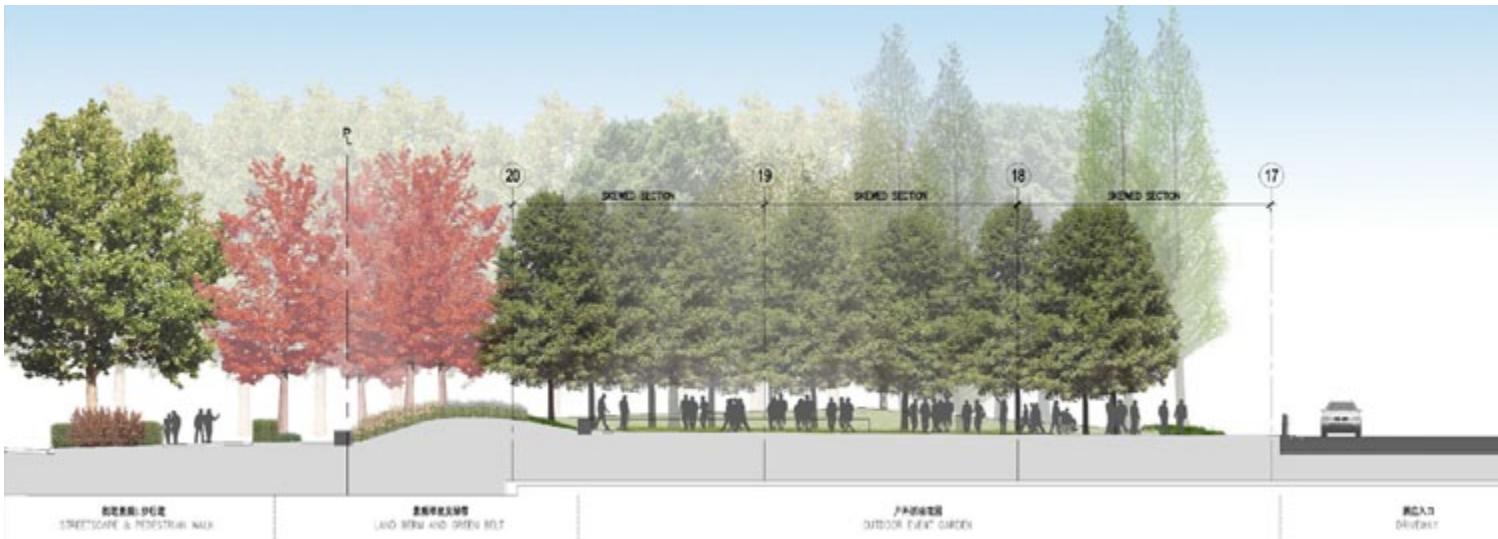


- 图例 LEGEND
- 01 下车点 DROP-OFF ZONE
  - 02 零售花园广场 RETAIL GARDEN PLAZA
  - 03 下沉花园 - 东庭院 SUNKEN GARDEN - EAST COURT
  - 04 下沉花园 - 西庭院 SUNKEN GARDEN - WEST COURT
  - 05 事件中心屋顶花园 (上方) EVENT CENTER ROOF GARDEN (ABOVE)
  - 06 绿带 GREEN BELT
  - 07 步行道景观 ALLEE STREETSCAPE
  - 08 户外事件花园 OUTDOOR EVENT GARDEN
  - 09 休息花园 GARDEN OF PAUSE
  - 10 水景 WATER FEATURE
  - 11 车库入口 GARAGE ENTRANCE
  - 12 服务入口 SERVICE ENTRANCE
  - 13 巴士下车点 BUS DROP-OFF ZONE
  - 14 卵石石径 COBBLE STONE ROADWAY
  - 15 特殊铺装 SPECIAL STONE PAVING
  - 16 台阶 STAIRS
  - 17 坡道 RAMP STAIRS
  - 18 座椅墙 SEAT WALLS
  - 19 柱墩 BOLLARDS
  - 20 可移动柱墩 (消防车道) REMOVABLE BOLLARDS (FIRE LANE ZONE)
  - 21 冷却塔结构 COOLING TOWER STRUCTURE
  - 22 塔楼路径花园 TOWER PATH GARDEN
  - 消防车道 FIRE LANE
  - W 几何块状草坪 W GEO BLOCK TURF PAVING
  - 通风口、消防楼梯、疏散楼梯 VENTS, FIRE EXIT STAIRS, SEE ARCH
  - 红线 PROPERTY LINE

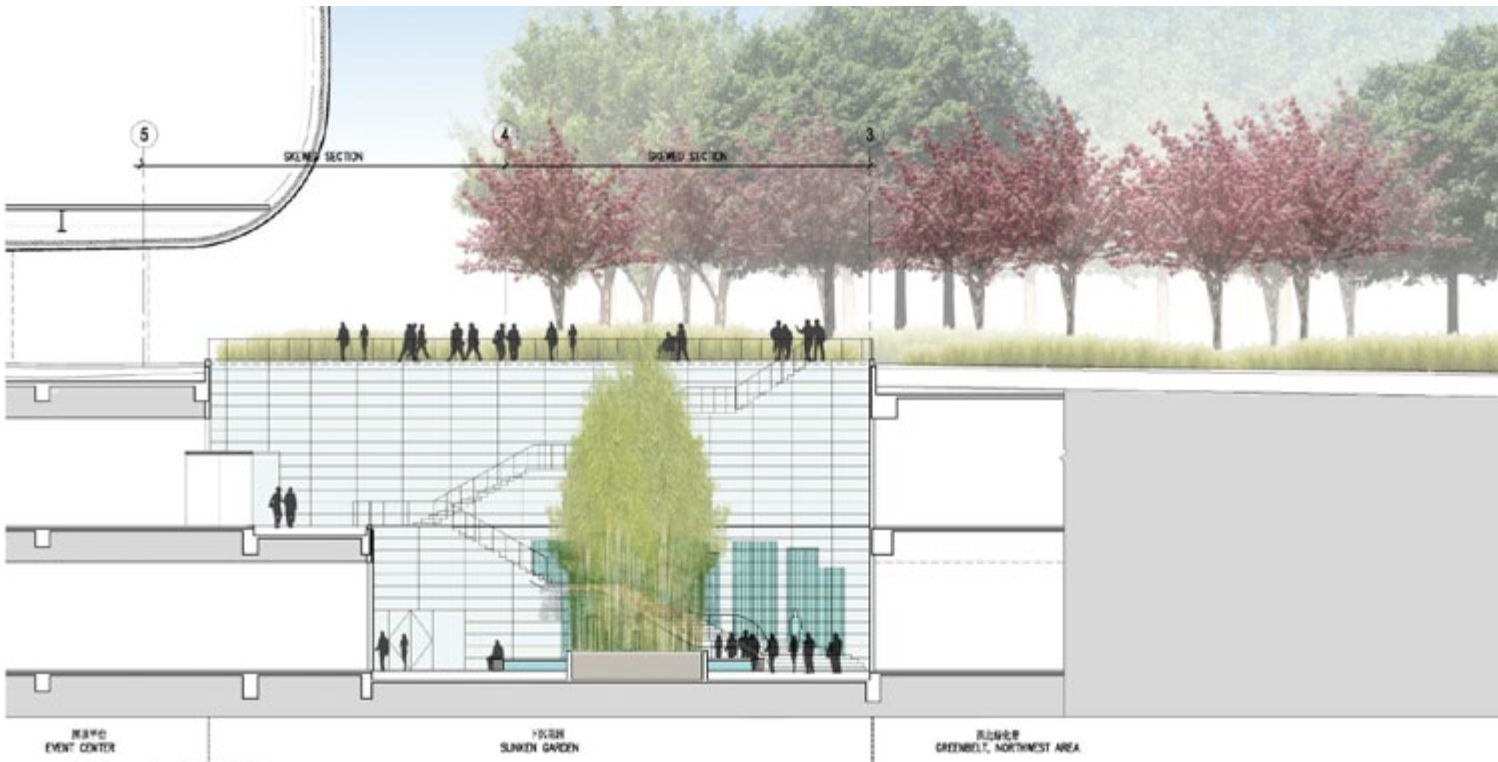
LANDSCAPE PLAN



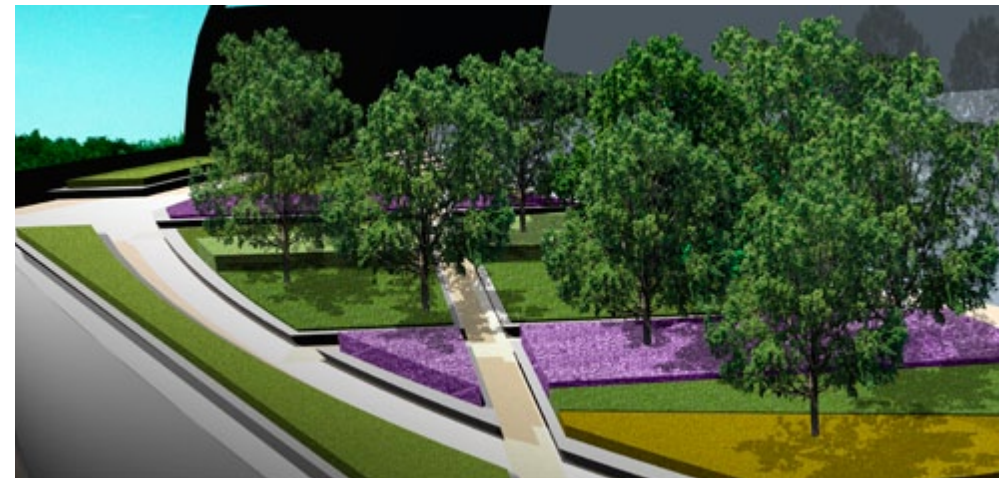
EAST ENTRANCE AND WATER FEATURE



OUTDOOR EVENT GARDEN



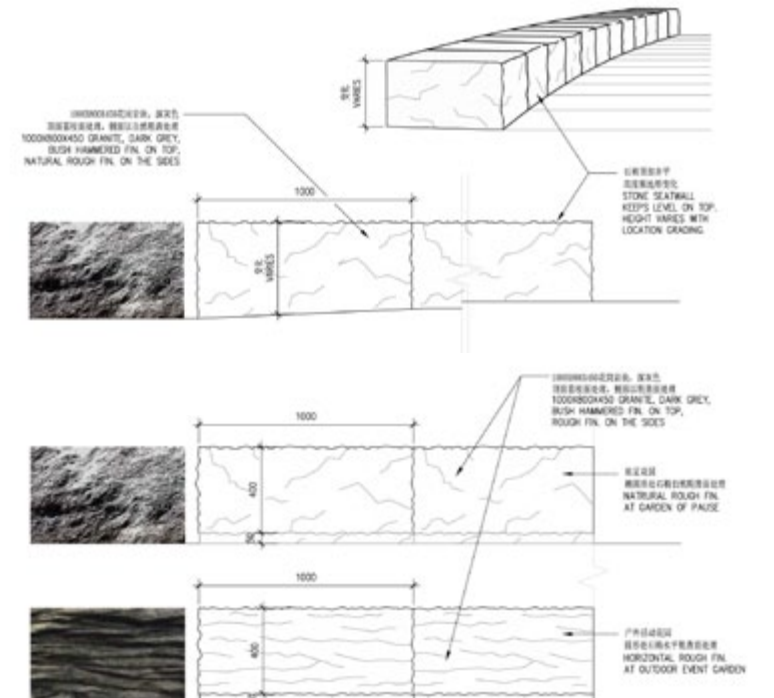
SUNKEN GARDEN

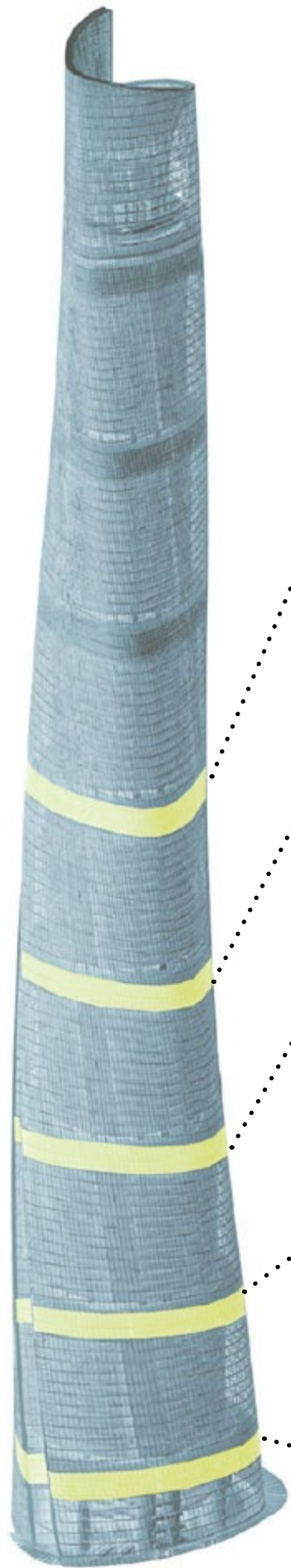


ROOF GARDEN

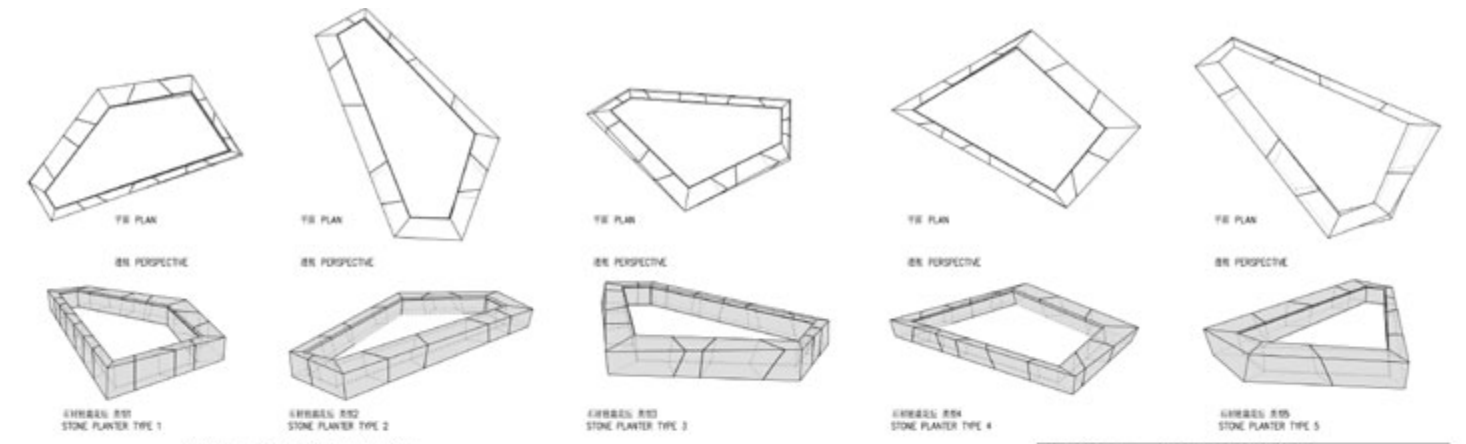
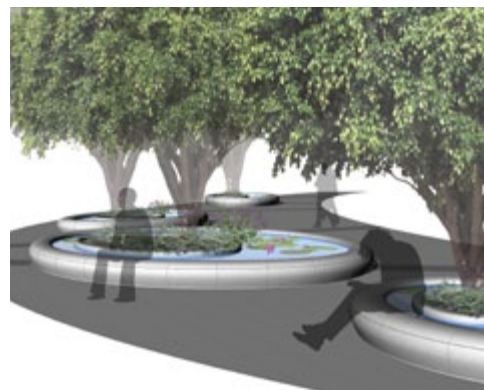
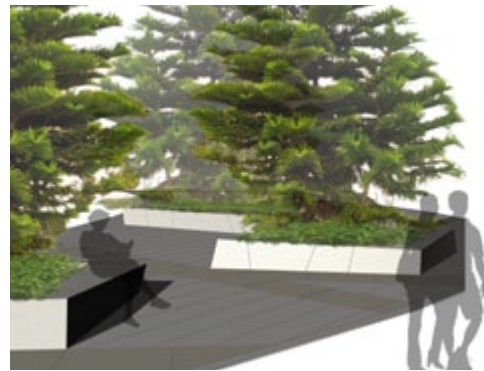
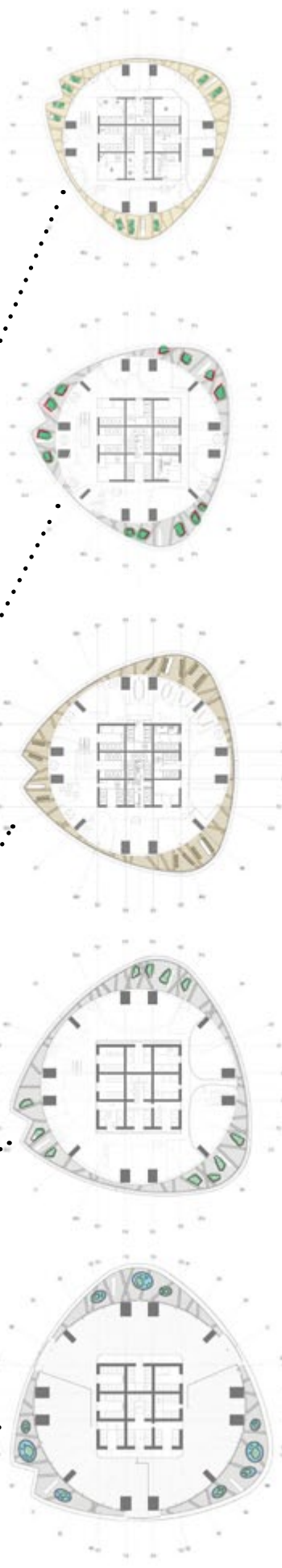


STONE SEATWALL AT EVENT GARDEN



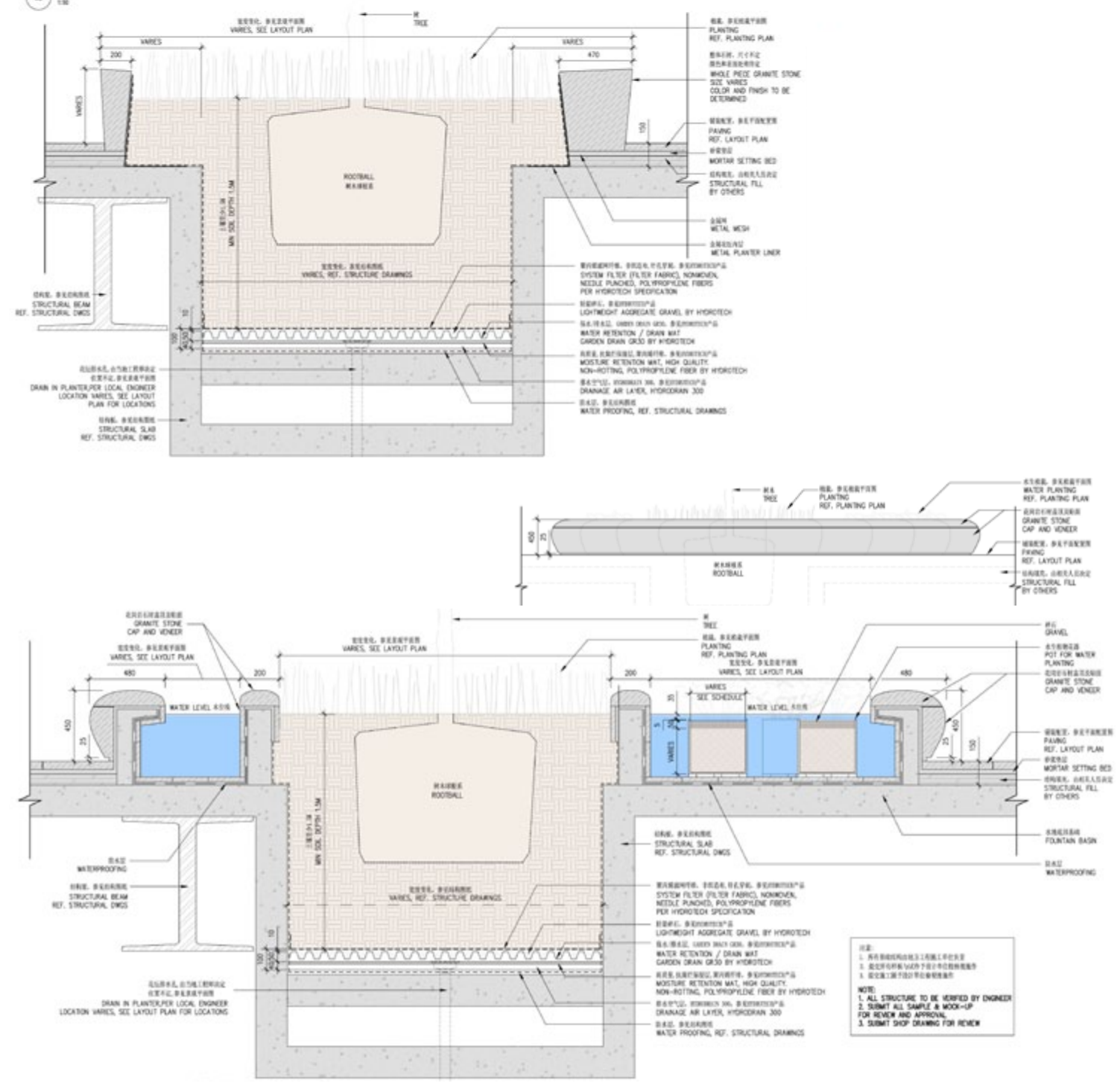


ATRIUM LEVELS



植栽花坛 - 22层中庭花园 平面透视图  
RAISED PLANTERS, ATRIUM LEVEL 22ND PLAN & PERSPECTIVE

FOR DETAIL/DIMENSION INFORMATION, PLEASE REFER TO THE 3D MODEL FILES INCLUDED IN THE PACKAGE



ATRIUM LEVEL PLANTERS