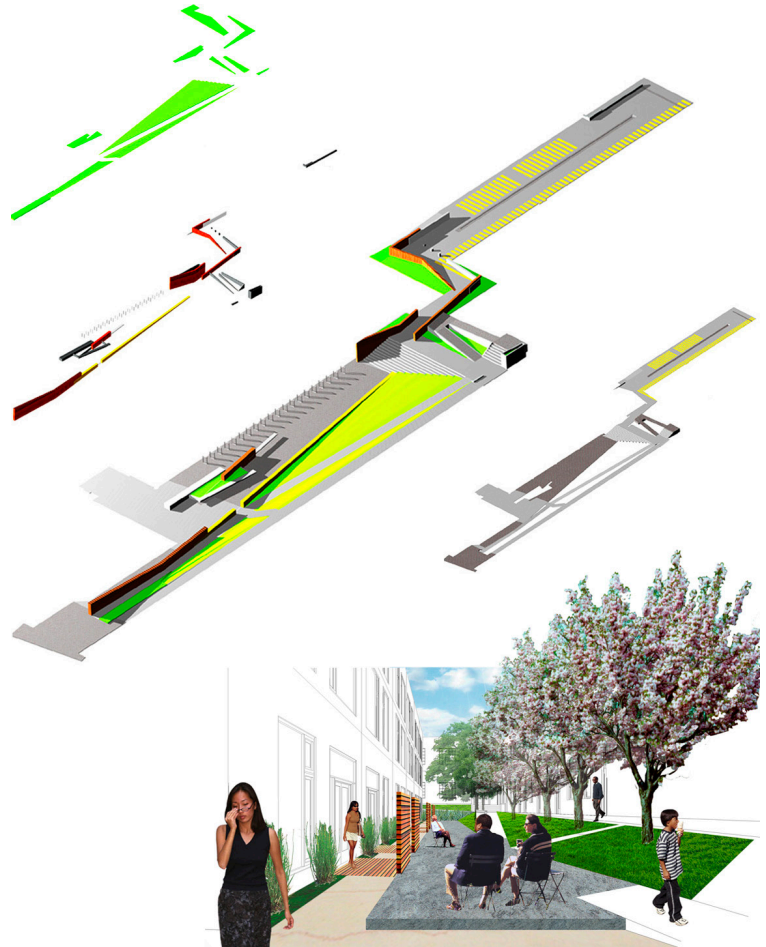
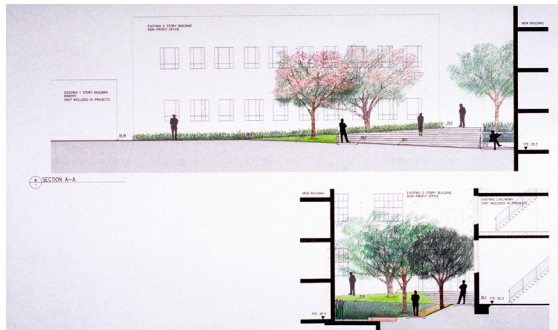
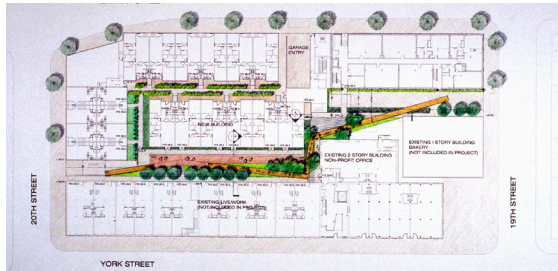


Bryant Square



The project includes the renovation of two seismically unreinforced brick buildings and the creation of two new buildings. The remainder of the block contains existing live-work units, arts-related commercial lofts, a wholesale bakery and a coffee roastery. The space between the buildings becomes a reclaimed mid-block alleyway for shared public and private use. Landscape elements include terrazzo paving, a sloping lawn, linear benches and walls, a very long seatwall and plantings of native grasses, ginkgos, pears and Chinese hackberry.

Location

San Francisco, California

Client

SKS Investments

SWA Scope

Landscape architectural services

Size

One block

Architect

PFAU Architecture