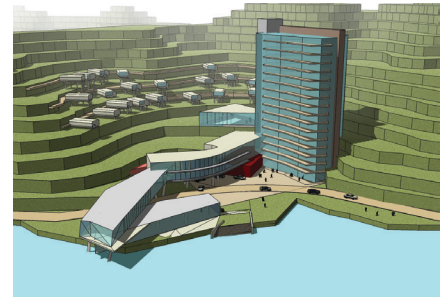
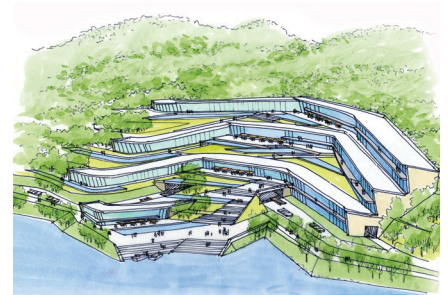


Sunyoung Taoyuanming Villas and Hotel Resort



Location
Chengdu, China
Client
Changdu Sunshine Investment & Construction LTD
SWA Scope
Master Planning Urban Design
Size
133 Hectares

Located at the south side of Chengdu, one of the biggest cities in South-West China, the rural 133 ha site embraces a beautiful lake by mountains and lush forests. The project's main program includes low-density residential community, high-rise residential towers, five-star hotel, retail center, and forest park. The challenge is how to take advantage of the scenic lake view while integrating with the surrounding steep slopes. The most valuable housing located around the lake, a luxury hotel, is adjacent to the central lake and meandering creek, and incorporates community facilities such as a conference center, pool, spa, and tea houses. A boutique retail center along the creek and facing the project entry will serve both the community and local residents. Ridgelines and steeper slopes with forests will be preserved as a park.