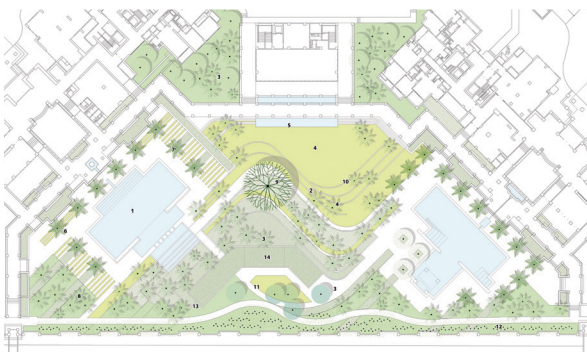
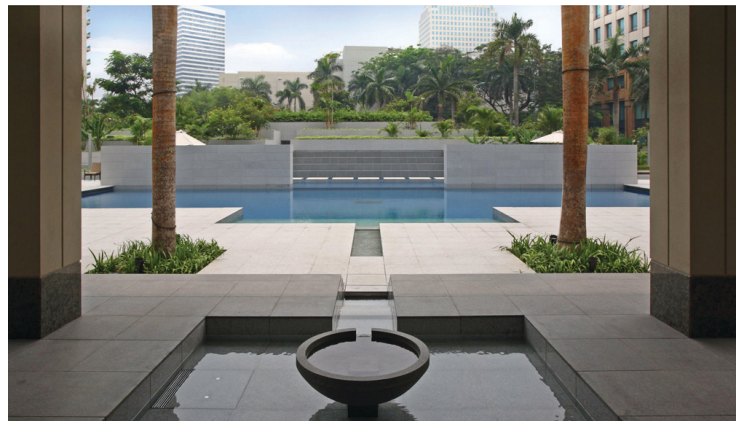


Senayan Square Apartment Towers



The project is a residential complex with four service apartment towers located in Jakarta, Indonesia. SWA provided landscape design services for new Towers C and D as well as partial renovation for the existing Towers A and B. The major landscape area is about 5,000 m² providing space for outdoor amenities such as swimming pools, putting green, dining patio, sculpture garden and other garden areas for the residents.

Location

Jakarta, Indonesia

Client

Kajima Corporation Architectural Design Group
Pt. Senayan Trikarya Sempana

SWA Scope

Schematic Design Alternatives
Landscape Architectural Services

Size

Project - 13,950 m²
Landscape - 5,000 m²