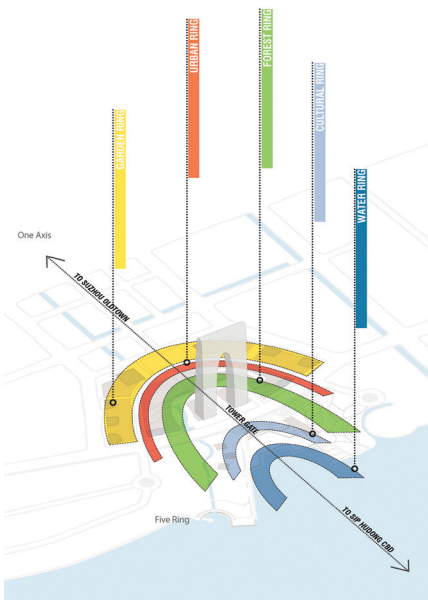
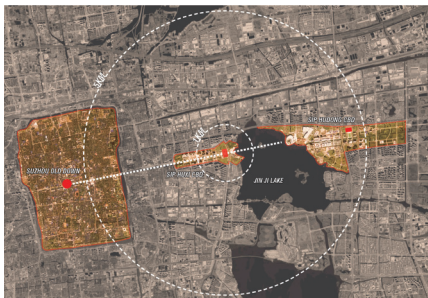


Suzhou Center



The Suzhou Center is a landmark urban space within the Suzhou CBD. The project embodies the spirit of Suzhou as a gateway for intersecting old and new cultural and historic heritage. It will help the city become a garden city where high density development and ecological conservation combine perfectly. The state-of-the-art sustainable development measures will become a paragon for responsible urban development. Through consistent planning of public open spaces, and leveraging the central location of the Huxi CBD and the high-quality landscape around the Jinji Lake, the urban landscape of the CBD will be seamlessly linked to the waterfront open spaces in order to create a unique environment in which natural greenery is in harmony with the urban setting. The design provides outdoor recreational spaces, of various levels and types, to

Location
Suzhou CBD, Suzhou, China

Client
SIP Jinji Lake Urban Development Co., Ltd.
SIP Planning and Construction Bureau

SWA Scope
Master Planning
Landscape Architecture

Size
265,000 m²

Architects
Nikken Sekkei Ltd.
Benoy Architects

Awards
Suzhou Center international Design Competition Winner

facilitate the interaction and communication among people as well as between people and environment, and to create an urban center that serves residents and visitors alike.